

## LATHAN • McKEE ARCHITECTS

300 CHASE PARK SOUTH • SUITE 200 • HOOVER, ALABAMA 35244  
205-988-9112

**ADDENDUM NO. 2**  
**NEW EMA CENTER FOR RUSSELL COUNTY, AL**  
**Architect Job No. 25-13**  
**November 17, 2025**  
**DCM #TBD**

---

**BIDS DUE:**

**Tuesday, December 2, 2025, until  
2:00 p.m., local time, held at  
Russell County Commission  
1000 Broad Street  
Phenix City, AL 36867**

**MANDATORY PRE-BID MEETING:**

**Wednesday, November 19, 2025, at  
10:00 a.m., local time, held at  
Russell County Emergency Management Agency / Homeland Security  
311 Prentiss Drive  
Phenix City, AL 36869**

---

The Plans and Specifications are hereby amended. The following supersedes all contrary and/or conflicting information and is made part of the contract documents.

---

**SPECIFICATIONS**

1. **REVISED SECTION 08810 – GLASS AND GLAZING** IN ITS ENTIRETY.

**DRAWINGS**

1. **SHEET A2.1** – REMOVED CASEWORK/FURNITURE FROM DISPATCH 111 AND ADDED A NOTE.
2. **SHEET A5.1** – CHANGED WALL TILE SIZE ON ELEVATIONS 7, 8, 9, 11, 12, 13, 14, 15.
3. **SHEET A6.1** – REPLACE PAGE IN ITS ENTIRETY.
4. **SHEET A6.2** – DELETED DISPATCH 111 ELEVATIONS 5 AND 6- REVISED NUMBERING SEQUENCE.
5. **SHEET A6.3** – REPLACE PAGE IN ITS ENTIRETY.

6. **SHEET A8.1** – BREAKROOM 113 AND DAYROOM 119 REPLACED LVT- 1 WITH LVT-2/  
DEPUTY DIRECTOR OFFICE 127 AND DIRECTOR OFFICE 124 REPLACED CPT-2 WITH  
CPT-1.
7. **SHEET A8.2** – REVISED FINISH SCHEDULE AND REMOVED CWT-3 AND GWT-2.

1.0 - GENERAL

1.1 Scope

The work under this section consists of all glass and glazing.

1.2 Quality

- A. Glazing shall be provided to comply with Table 5.3.1 Building Envelope Requirements - Climate Zone 1 of the Alabama Building Energy Conservation Code, and the 2021 International Building Code.
- B. Glazing for Fire-Rated Door and Window Assemblies: Glazing tested per NFPA 252 and NFPA 257, as applicable, for assemblies complying with NFPA 80 and listed and labeled per requirements of authorities having jurisdiction.
- C. Safety Glazing Products: Comply with size, glazing type, location, and testing requirements of 16 CFR 1201 for Category I and II glazing products, and requirements of authorities having jurisdiction.
- D. Glazing Industry Publications: Comply with glass product manufacturers' recommendations and the following:
  - 1. GANA Publications: GANA Laminated Division's 'Laminated Glass Design Guide' and GANA's 'Glazing Manual.'
  - 2. IGMA Publication for Insulating Glass: IGMA TM-3000, 'Glazing Guidelines for Sealed Insulating Glass Units.'
- E. Insulating-Glass Certification Program: Indicate compliance with requirements of Insulating Glass Certification Council on applicable glazing products.

1.3 Samples

Submit for approval samples of each kind of glass required. Each sample shall bear a label indicating the kind and quality of the glass and the manufacturer. **Only 1 sample each is required.**

1.4 Warranty

- A. Warranty for Coated-Glass Products: Manufacturer's standard form, signed by coated-glass product primary manufacturer or manufacturer/fabricator, as applicable, agreeing to replace coated-glass units that display peeling, cracking, and other deterioration in metallic coating under normal use, within 10 years of date of Substantial Completion.
- B. Warranty for Laminated Glass: Manufacturer's standard form, signed by laminated-glass product manufacturer/fabricator, agreeing to replace laminated-glass units that display edge separation, delamination, and blemishes exceeding those allowed by ASTM C 1172, within five years of date of Substantial Completion.
- C. Warranty for Insulating Glass: Manufacturer's standard form, signed by insulating-glass product manufacturer/fabricator, agreeing to replace insulating-glass units that exhibit failure of hermetic seal under normal use evidenced by the obstruction of vision by dust, moisture, or film on interior surfaces of glass, within 10 years of date of Substantial Completion.

- D. Installer's Warranty: Form acceptable to Owner, signed by glass product Installer, agreeing to replace glass products that deteriorate, or that exhibit damage or deterioration of glass or glazing products due to faulty installation, within 2 years of date of Substantial Completion.

## 2.0 - PRODUCTS

### 2.1 Manufacturer

Glass products shall be as manufactured by Vitro Architectural Glass., Guardian Industries, Inc., or Pre-approved equal. Laminated pattern glass shall be as manufactured by North American Glass Fabrication. Fire-rated, safety-rated wired glass shall be manufactured by Technical Glass Products, Pilkington or SaftFirst.

### 2.2 Materials

Glass shall be as defined in, and in accordance with Code of Federal Regulations 16 CFR 1201 - Safety Standard for Architectural Glazing Materials.

- A. Compound for face glazing, or where shown or indicated as compound shall be an oleo-resinous knife grade elastic glazing compound such as Tremco's Trem-glaze, Pecora's M-242, or Dap-1012.
- B. Sealant where shown or indicated shall be Tremco "Mono," Dow Corning 780, or GE's construction sealant.
- C. Tape where shown or indicated shall be Tremco's 440 Tape, Curtis 606 Tape, or Warflex's "Sealing Tape."
- D. Neoprene setting blocks as approved by glass manufacturer Shore "A" Hardness approximately 70 to 90.
- E. Neoprene spacer shims as approved by glass manufacturer Shore "A" Hardness approximately 40 to 60.
- F. Neoprene glazing beads as approved for aluminum store front and doors.
- G. Color of compound, sealant, tape, etc. shall be as selected.
- H. Glare reducing glass shall be 1/4" thick Solargray, Solargreen, or Solarbronze as selected.
- I. Glare reducing Tempered Safety glass shall be 1/4" thick Solargray, Solargreen, or Solarbronze as selected. When multiple small glass panes are used in the same door or sidelight, provide one (1) only Decal and furnish certificate verifying the use of Safety Glass in other panels.
- J. Interior Tempered Safety Glass shall meet 16CFR1201 Test Requirements, Cat. 1 and/or Cat. 2 as applicable. Etch label and furnish certificate verifying the use of Tempered Safety Glass.
- K. Interior laminated pattern safety glass shall be two (2) layers 1/4" thick tempered safety glass with adhesive sheets and light frost decorative interlayer with pattern as indicated.
- L. Fire safety glass shall be 5/16" thick clear laminated fire rated and impact safety rated glass. Approved equal to Pilkington Fire-Lite Plus or SaftiFirst SuperLite and

shall meet impact safety rating 16CFR1201 (Cat.1) if less than 9 sq. ft. and (Cat. 2) if greater than 9 sq. ft. Provide with label at all rated doors and frames..

- M. Polished plate glass mirrors shall be 1/4" copper back, moisture resistant with ground edges and beveled face grooving. Secure with adhesive and clips. Sizes and locations indicated.
- N. 1" insulating Glass - Pre-assembly Low-E unit consisting of 1/4" float glass exterior lite, 1/2" dehydrated air space and clear 1/4" float glass with Low-E interior lite meeting performance requirement for Class A or Class B Accelerated Test as specified in ASTM E744 with no visible fog. Match color on metal spacer to glazing frame. As selected by Architect. Provide minimum SHGC of .25.
  - 1. Solarban 60 Solar Gray + Clear
- O. Spandrel Glass - 1/4" thick, float glass with the opacifying coating on the number 2 (inboard) face. Temper or heat strengthen in accordance with the current Glass Tempering Association, Engineered Standard Manual. Opacifying coating shall be Opaci-Coat-300 Coating shall be Silicone water based glastomer with a min/max wet thickness of 8 mils. (0.008") and a protective coating of silicone rubber a minimum wet thickness of 13 mils (0.0013"). Color as selected by Architect. Provide minimum SHGC of .25.
  - 1. Solarban 60 Solar Gray + Clear "SolarGray Series"

### 3.0 - EXECUTION

#### 3.1 Preparation

- A. Immediately prior to glazing, all surfaces shall be wiped clean and free of protective coatings, moisture, and dust. All glazing shall be done when the temperature is 35° F or above.
- B. All sash shall be checked prior to glazing to make certain that the opening is square, plumb, and secured in order that uniform face and edge clearances are maintained. Inspect all butt and miter joints. If these joints are open, they shall be sealed with sealant prior to glazing. All ventilators shall be properly adjusted. Maintain 1/8" minimum bed clearance between glass and sash on both sides.
- C. All glass indicated in non-rated doors shall be tempered with etched label.
- D. All glass indicated in rated doors shall be fire safety glass with etched label.

#### 3.2 Setting

- A. Glazing preparation and procedures shall be as outlined in the Glazing Manual of the Flat Glass Jobbers Association.
- B. Glass shall be set without springing, and with an equal bearing the entire width and length of each piece.
- C. The actual sizes required shall be determined by measuring the frames to receive the glass. All glass shall be factory labeled.

- D. Glass shall be properly cut and set in accordance with the best practice of the trade.
- E. Center glass in glazing rabbet to maintain recommended clearances at perimeter for expansion and contraction, each face of glass.

3.3 Protection

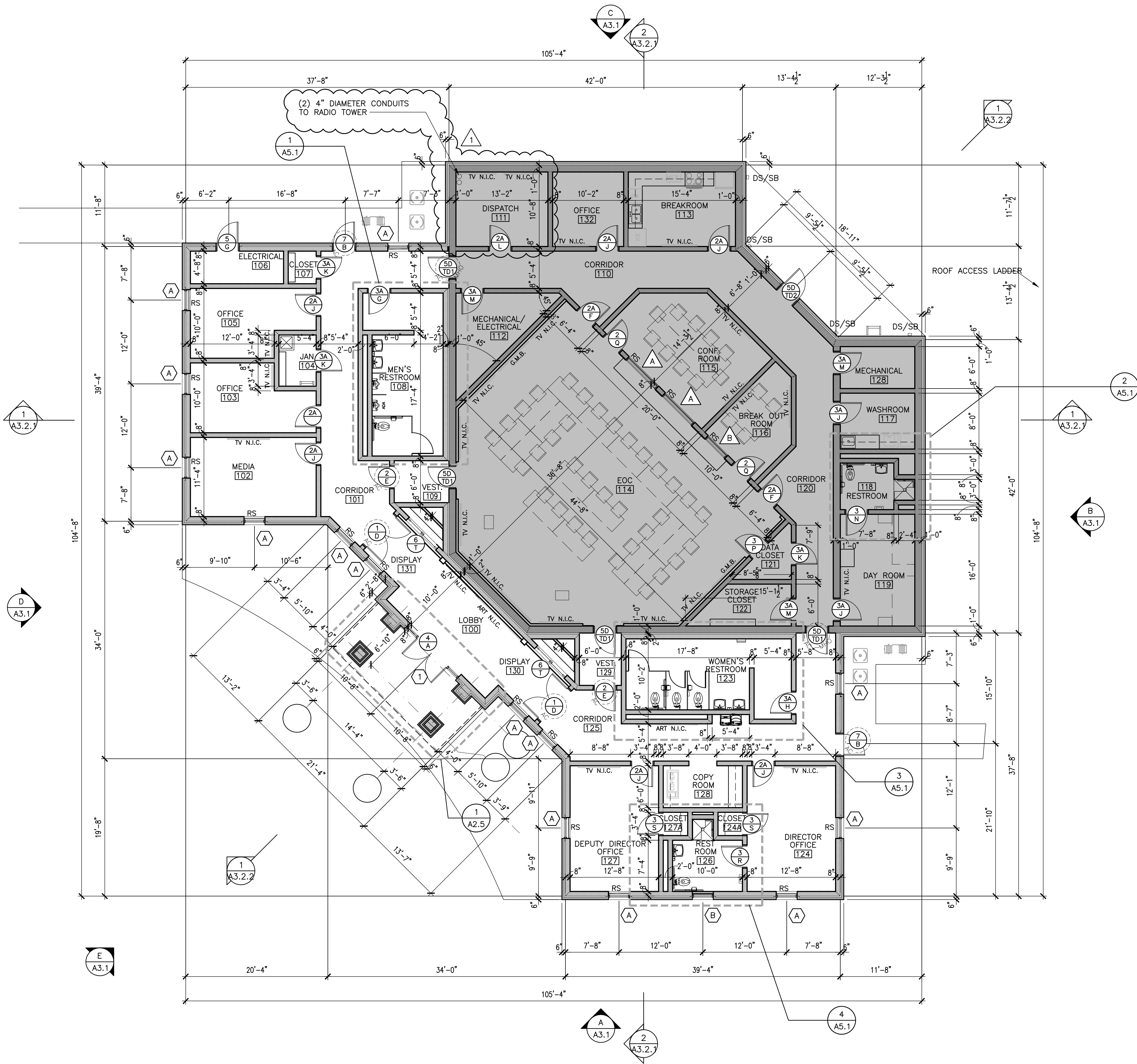
Immediately after installation, a marker letter shall be placed upon each pane of glass for protection against careless breakage. All broken, cracked, scratched, or otherwise damaged glass shall be replaced.

3.4 Cleaning

- A. Upon completion of the project, all glass shall have paint, dirt, and other stains removed; glass shall then be washed clean and polished.
- B. Labels on glass shall not be removed until final approval is obtained, and glass is ready for cleaning.

END OF SECTION





# 7 1 OVERALL FLOOR PLAN

SCALE: 1/8" = 1'-0"

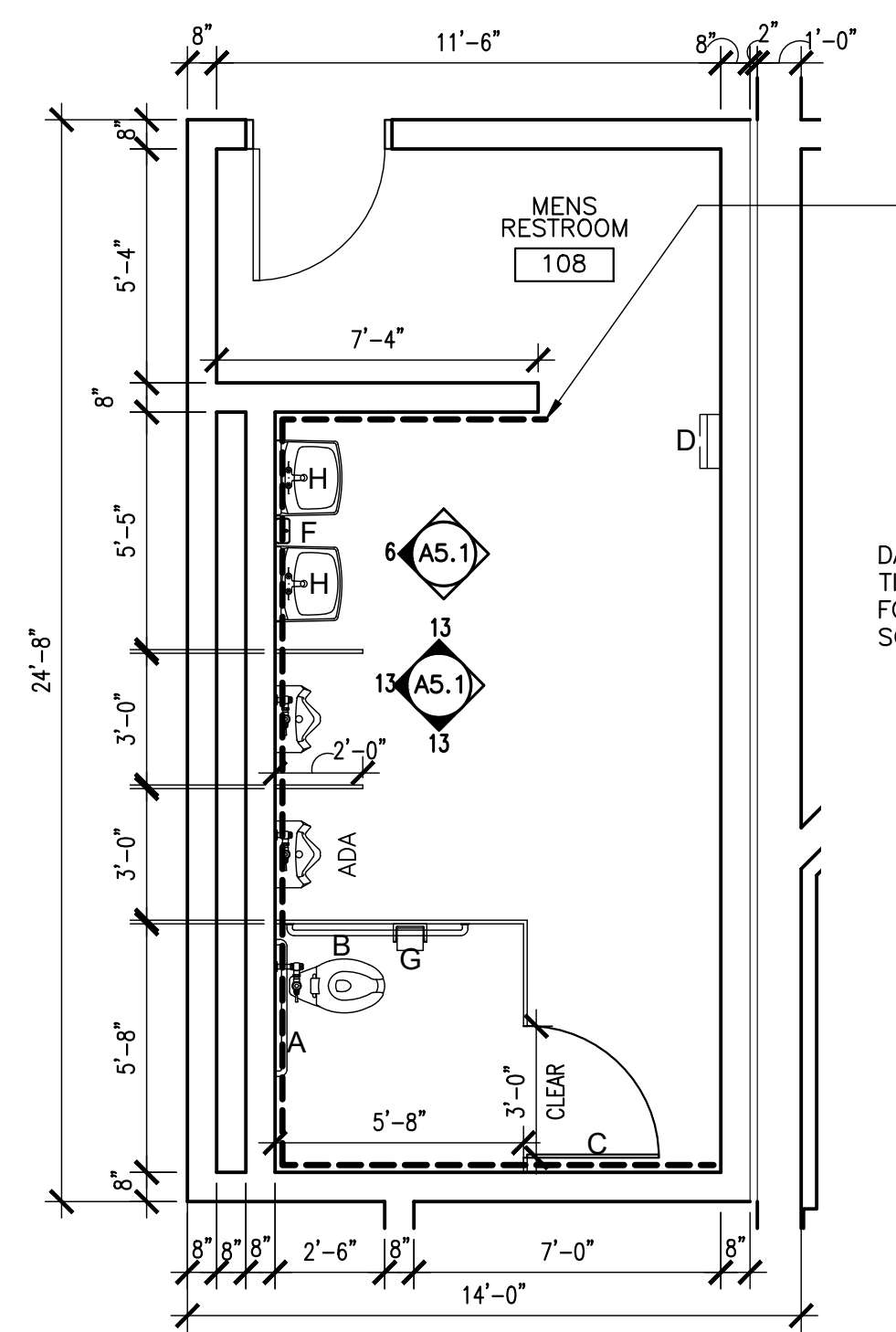
DOOR PLACEMENT LEGEND		
	FLUSH FRAME	
	CENTERED FRAME	
	OFFSET FRAME	

DOOR FIRE RATING LEGEND		
DOOR TYPE	(2)	NO RATING
DOOR TYPE + A	(2A)	20 MINUTE RATING
DOOR TYPE + B	(2B)	45 MINUTE RATING
DOOR TYPE + C	(2C)	60 MINUTE RATING
DOOR TYPE + D	(2D)	90 MINUTE RATING
DOOR TYPE + E	(2E)	180 MINUTE RATING

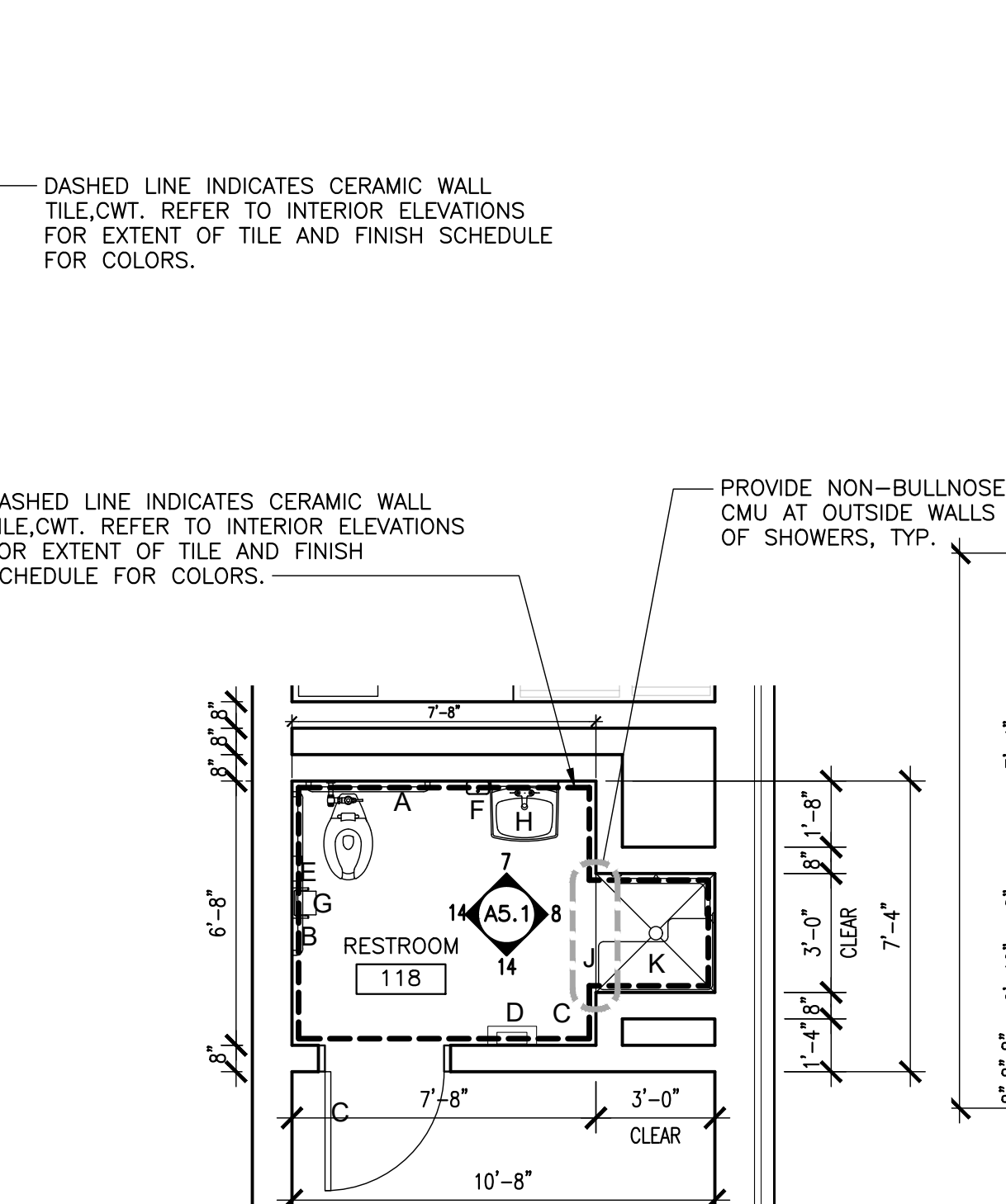
SYMBOLS LEGEND		
	DOOR TYPE	(2)
	DOOR RATING	(2A)
	HARDWARE SYMBOL	(2B)
	HOLD OPEN	(2C)
	DOOR TYPE	(2D)
	DOOR RATING	(2E)
	HARDWARE SYMBOL	(2F)
	ACCESS CONTROL	(2G)
	DOOR TYPE	(2H)
	DOOR RATING	(2I)
	HARDWARE SYMBOL	(2J)
	ROUGH IN ELECTRICAL	(2K)
	ELEV. MARK	(2L)
	SHEET NUMBER	(2M)
	NEW DOOR AND SWING	(2N)
	ELECTRIC WATER COOLER	(2O)
	TACK BOARD	(2P)
	MARKER BOARD	(2Q)
	RECESSED FIRE EXTINGUISHER CABINET WITH EXTINGUISHER	(2R)
	ROOM NUMBER	(2S)
	EXPANSION JOINT	(2T)
	SURFACE MOUNT FIRE EXTINGUISHER	(2U)
	WINDOW ROLLER SHADE (INSIDE FRAME)	(2V)
	DOOR TYPE	(2W)
	DOOR RATING	(2X)
	HARDWARE SYMBOL	(2Y)
	MANUAL HOLD OPEN	(2Z)
	SECT. MARK	(2AA)
	SHEET NUMBER	(2AB)
	ELEV. MARK	(2AC)
	SHEET NUMBER	(2AD)
	INTERIOR ELEVATION	(2AE)
	TYPE 'A' FOR NEW WALLS, NOT KEYED, CONTACT ARCHITECT FOR ALL INQUIRIES	(2AF)
	WALL PARTITION TYPE	(2AG)
	EXTERIOR WINDOW	(2AH)
	STOREFRONT	(2AI)
	INTERIOR WINDOW	(2AJ)
	AREA OF STORM SHELTER	(2AK)
	FLOOR DRAIN	(2AL)
	CONTROL JOINT	(2AM)

WALL TYPE LEGEND	
	NEW 4" BRICK VENEER W/ AIR SPACE AND RIGID INSULATION ON REINFORCED CMU WITH DAMP-PROOFING, PROVIDE BRICK WALL TIES @ 16" O.C.
	NEW 4" BRICK VENEER W/ AIR SPACE AND RIGID INSULATION ON REINFORCED 12" REINFORCED CMU WITH DAMPPROOFING, PROVIDE BRICK WALL TIES @ 16" O.C., SEE STRUCTURAL
	8" OR 12" CONCRETE MASONRY WALL. SEE PLAN FOR WALL WIDTH CHANGES. SEE LIFE SAFETY PLAN FOR FIRE RATING
	8" OR 12" CONCRETE MASONRY WALL. WITH 3-5/8" METAL STUDS AT 16" O.C. WITH 5/8" GYPSUM BOARD
	8" OR 12" CONCRETE MASONRY WALL, WITH 5/8" GYPSUM BOARD LAMINATED TO CMU
	12" REINFORCED CONCRETE MASONRY WALL AT STORM SHELTER, SEE STRUCTURAL
	FIRE RATED 8" OR 12" CONCRETE MASONRY WALL. SEE LIFE SAFETY PLAN FOR UL DESIGN
	FIRE RATED 8" OR 12" CONCRETE MASONRY WALL. SEE LIFE SAFETY PLAN FOR UL DESIGN
	FIRE RATED 8" OR 12" CONCRETE MASONRY WALL. SEE LIFE SAFETY PLAN FOR UL DESIGN
	FIRE RATED 8" OR 12" CONCRETE MASONRY WALL. SEE LIFE SAFETY PLAN FOR UL DESIGN
	8" OR 12" CONCRETE MASONRY WALL WITH SOUND ATTENUATION

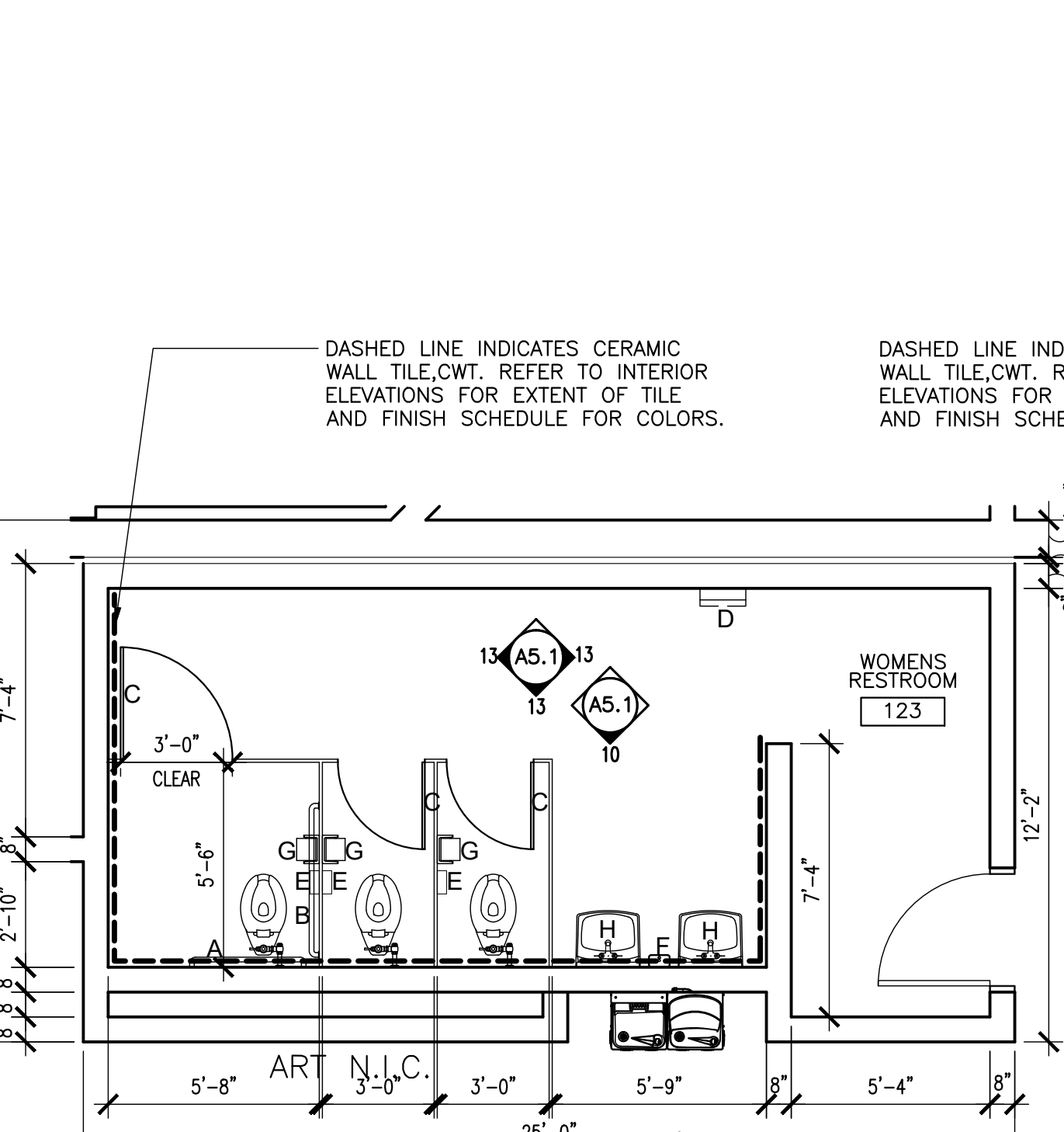




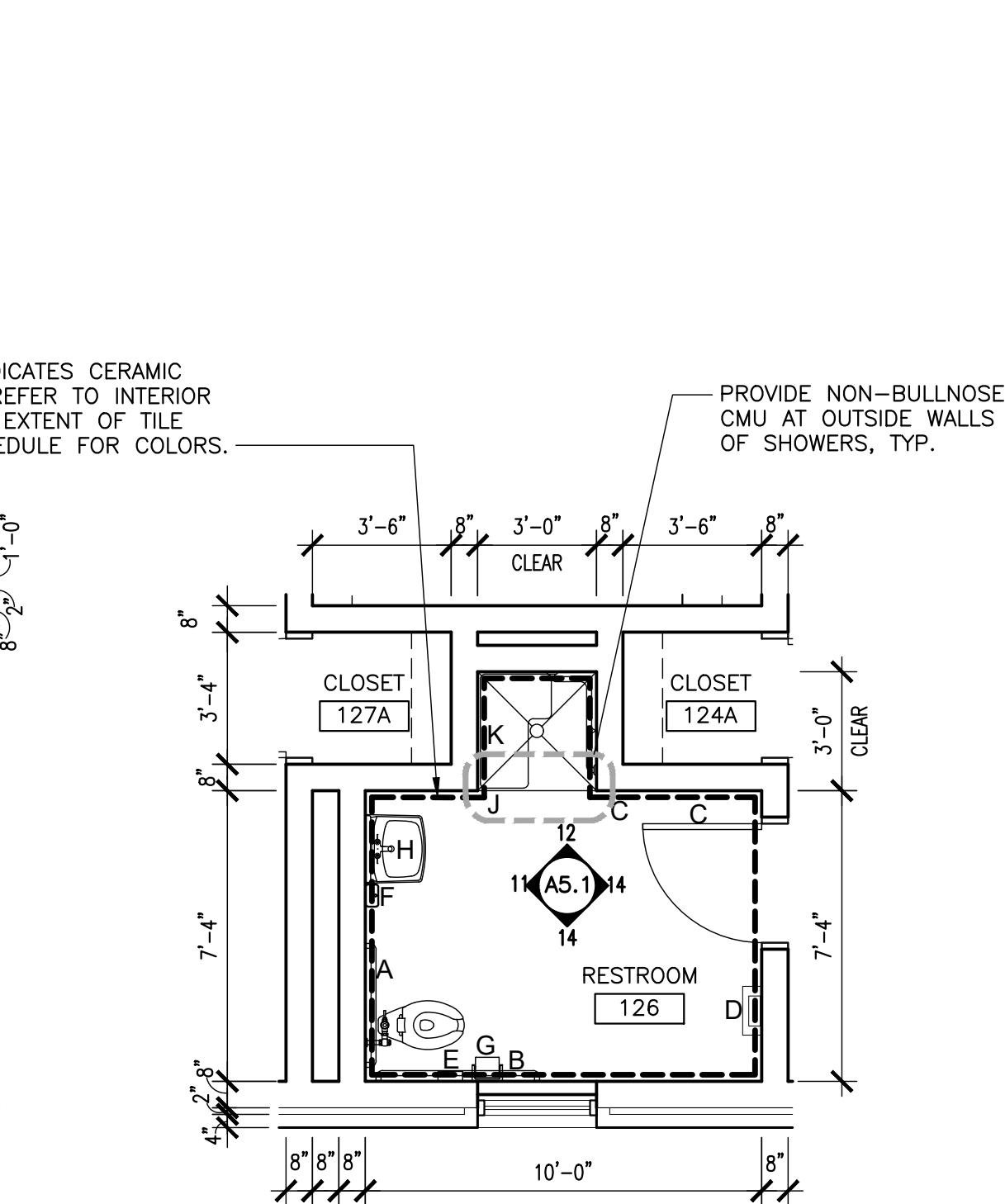
**1 ENLARGED TOILET PLAN** • MEN'S 108  
SCALE: 1/4" = 1'-0"



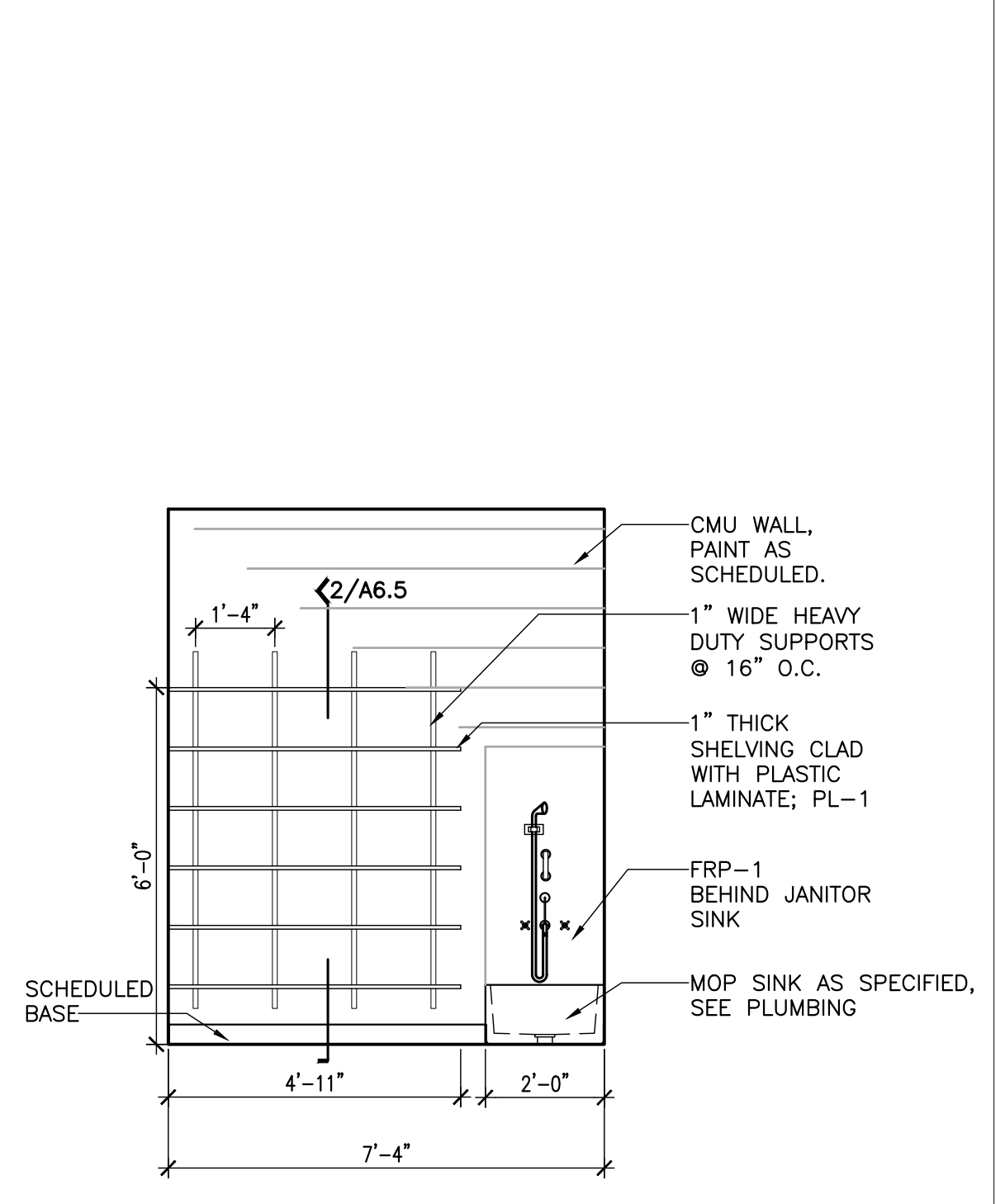
**2 ENLARGED TOILET PLAN** • RESTROOM 118  
SCALE: 1/4" = 1'-0"



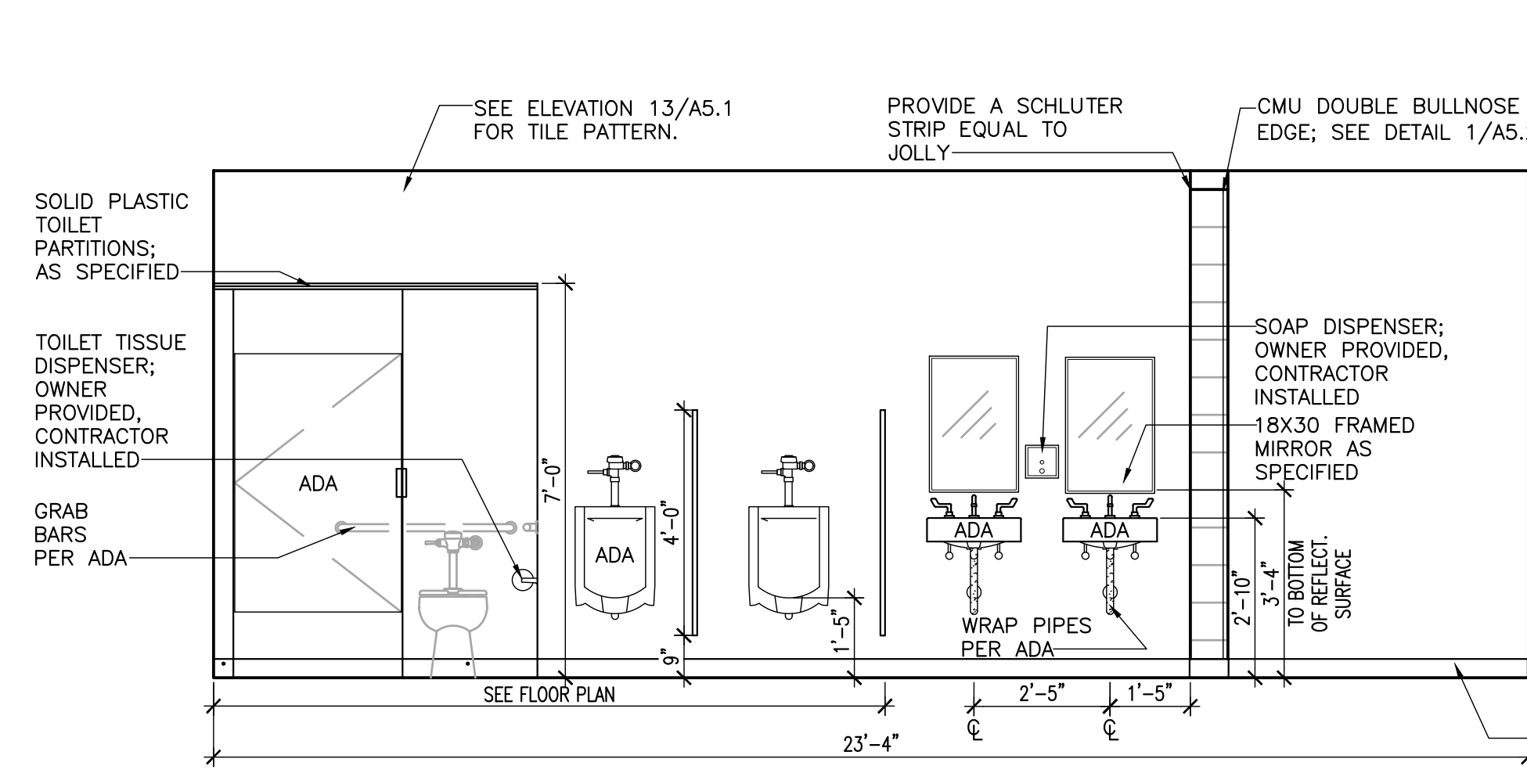
**3 ENLARGED TOILET PLAN** • WOMEN'S 123  
SCALE: 1/4" = 1'-0"



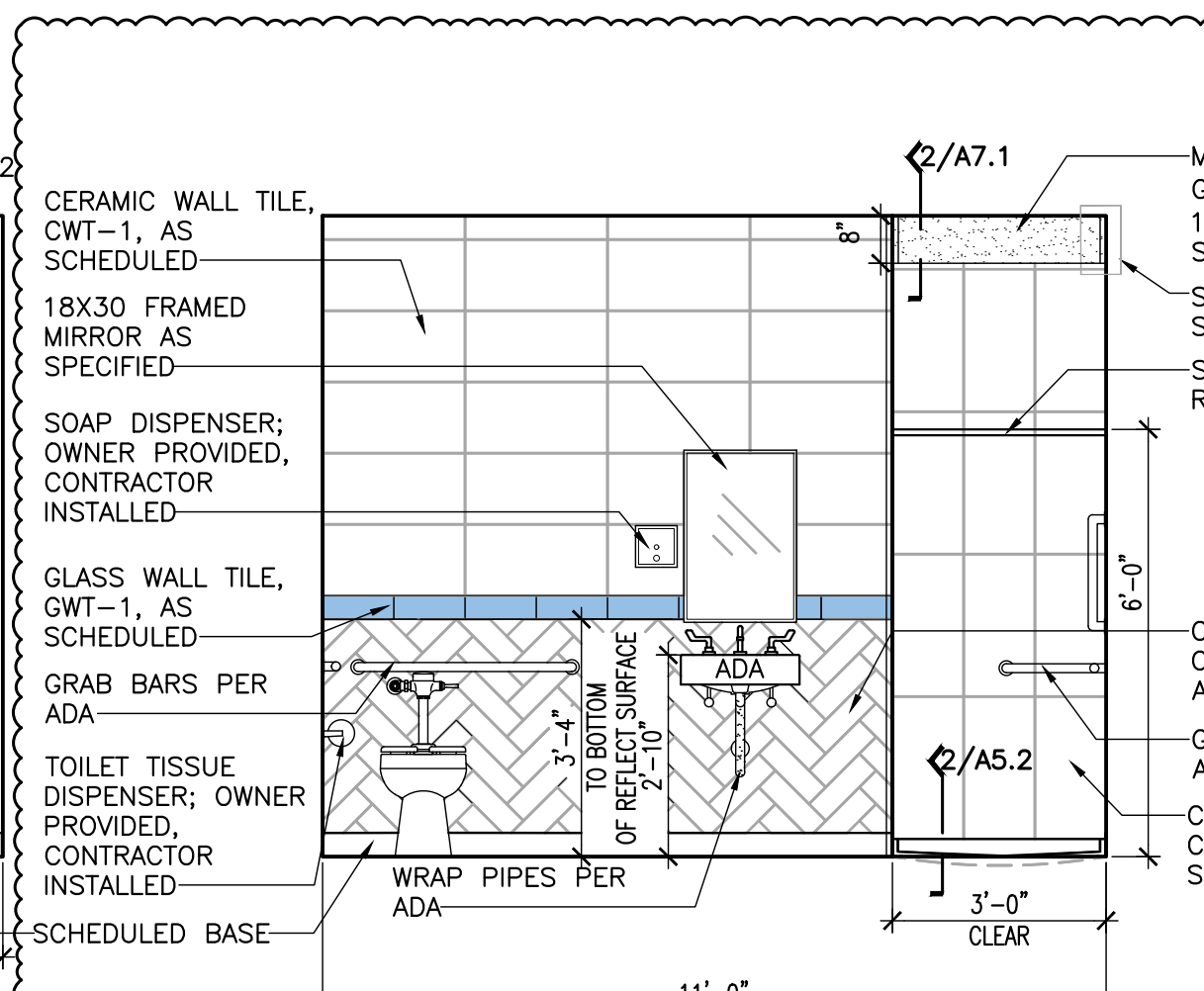
**4 ENLARGED TOILET PLAN** • RESTROOM 126  
SCALE: 1/4" = 1'-0"



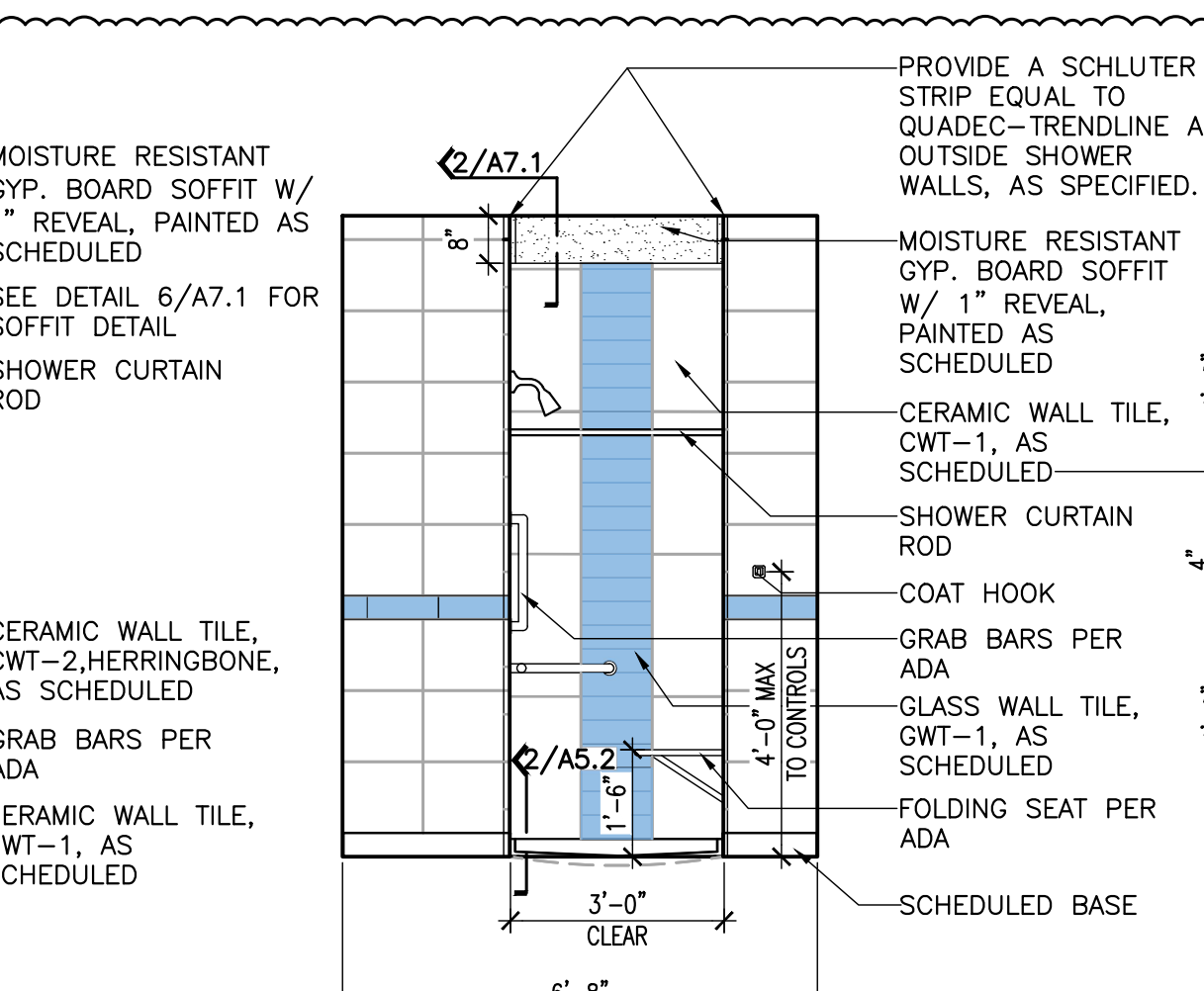
**5 INTERIOR ELEVATION** • JAN 104  
SCALE: 3/8" = 1'-0"



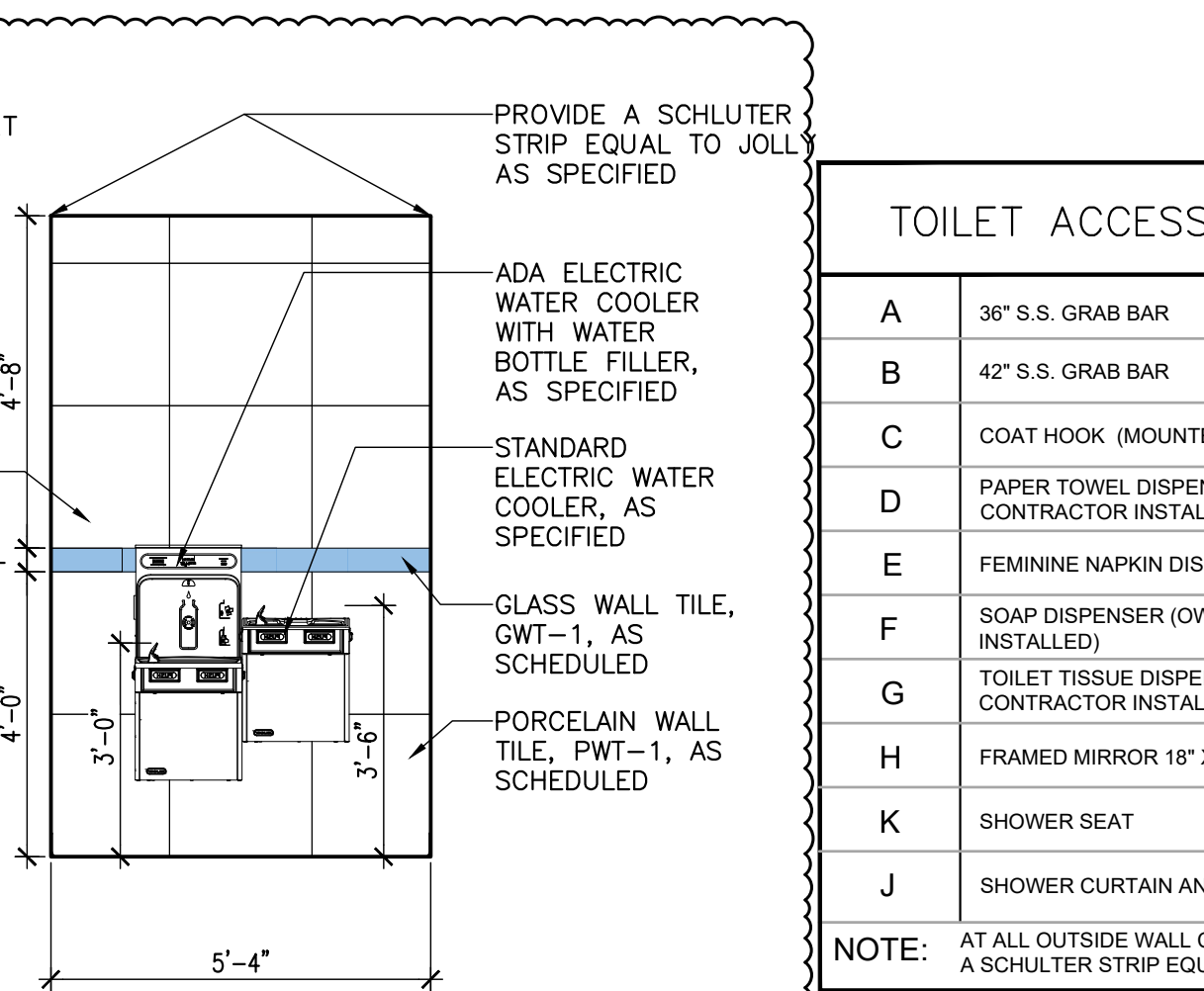
**6 INTERIOR ELEVATION** • MEN'S 108  
SCALE: 3/8" = 1'-0"



**7 INTERIOR ELEVATION** • RESTROOM 118  
SCALE: 3/8" = 1'-0"



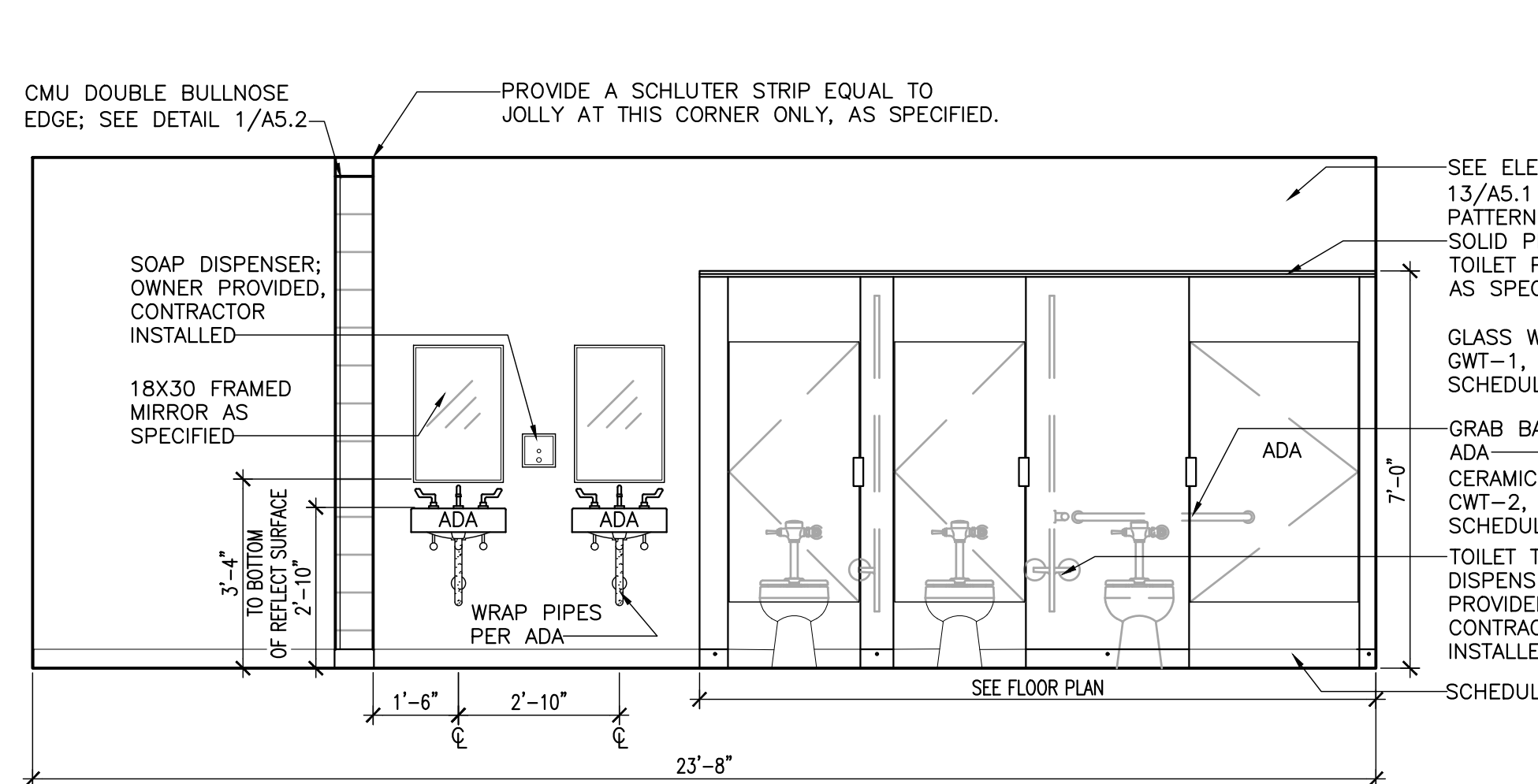
**8 INTERIOR ELEVATION** • RESTROOM 118  
SCALE: 3/8" = 1'-0"



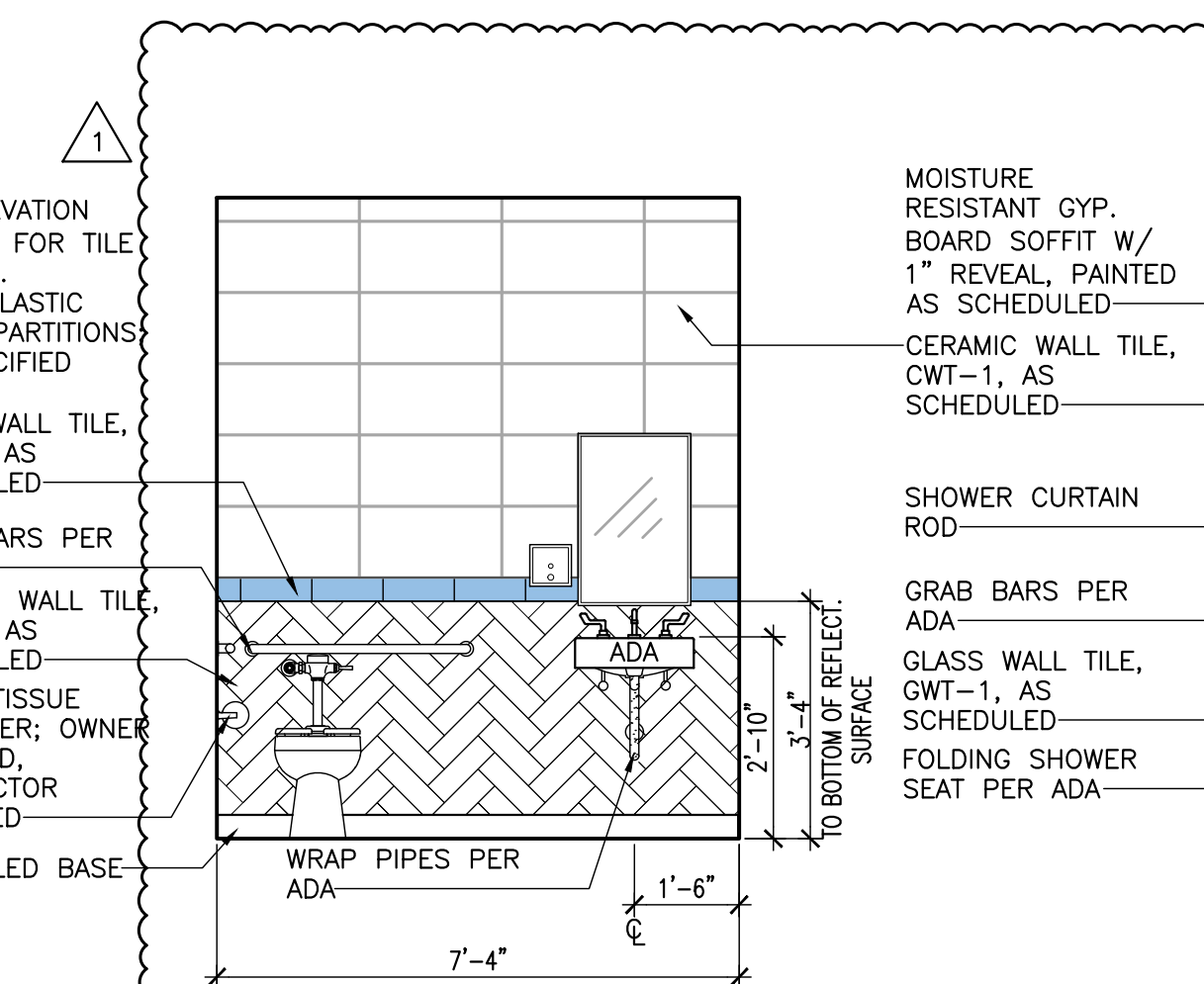
**9 INTERIOR ELEVATION** • EWC CORRIDOR 125  
SCALE: 3/8" = 1'-0"

TOILET ACCESSORY LEGEND	
A	36" S.S. GRAB BAR
B	42" S.S. GRAB BAR
C	COAT HOOK (MOUNTED ON INTERIOR STALL DOOR)
D	PAPER TOWEL DISPENSER (OWNER PROVIDED, CONTRACTOR INSTALLED)
E	FEMININE NAPKIN DISPOSAL
F	SOAP DISPENSER (OWNER PROVIDED, CONTRACTOR INSTALLED)
G	TOILET TISSUE DISPENSER (OWNER PROVIDED, CONTRACTOR INSTALLED)
H	FRAMED MIRROR 18" X 30"
K	SHOWER SEAT
J	SHOWER CURTAIN AND ROD

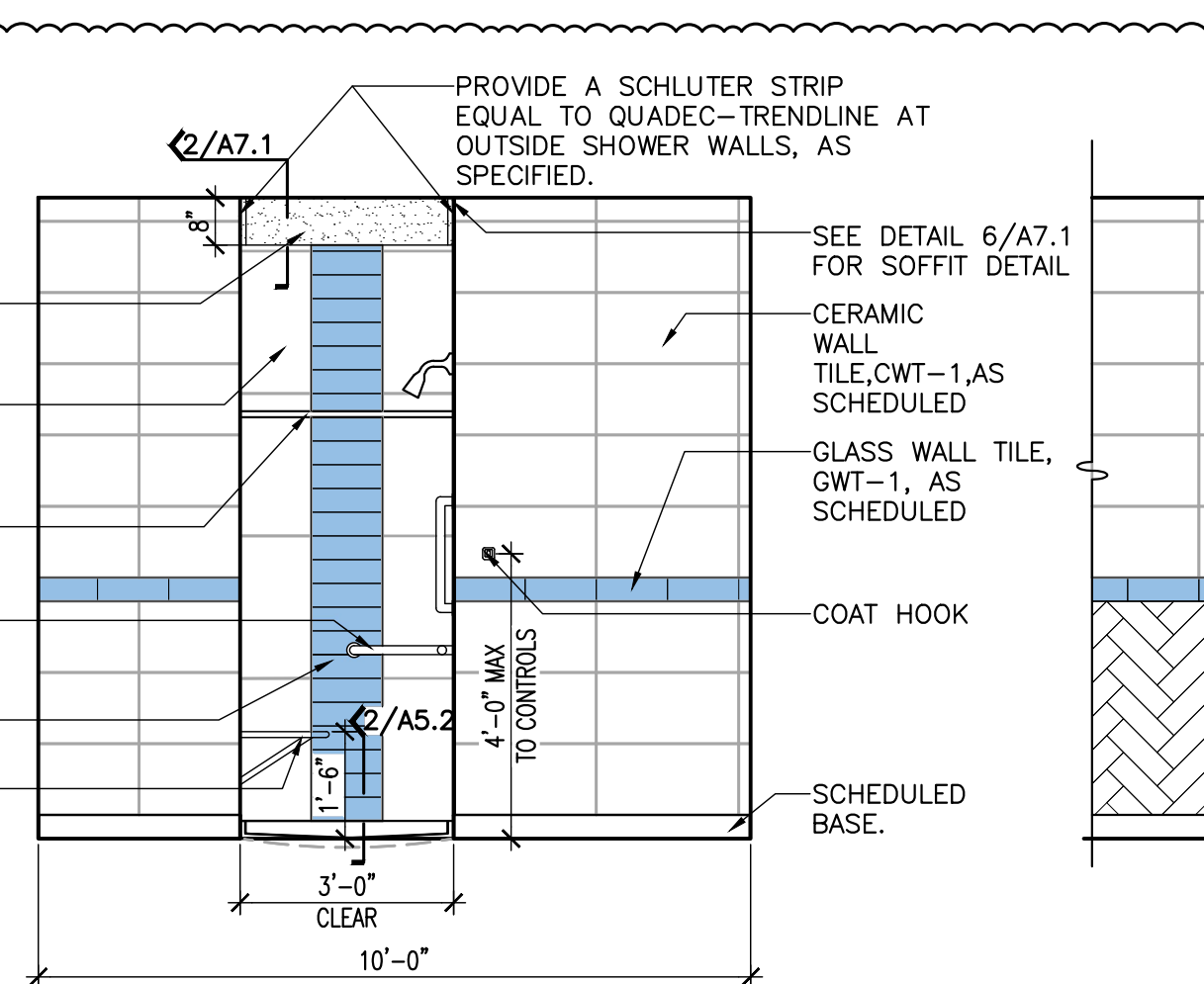
NOTE: AT ALL OUTSIDE WALL CORNERS AND EDGES PROVIDE A SCHLUTER STRIP EQUAL TO JOLLY, AS SPECIFIED



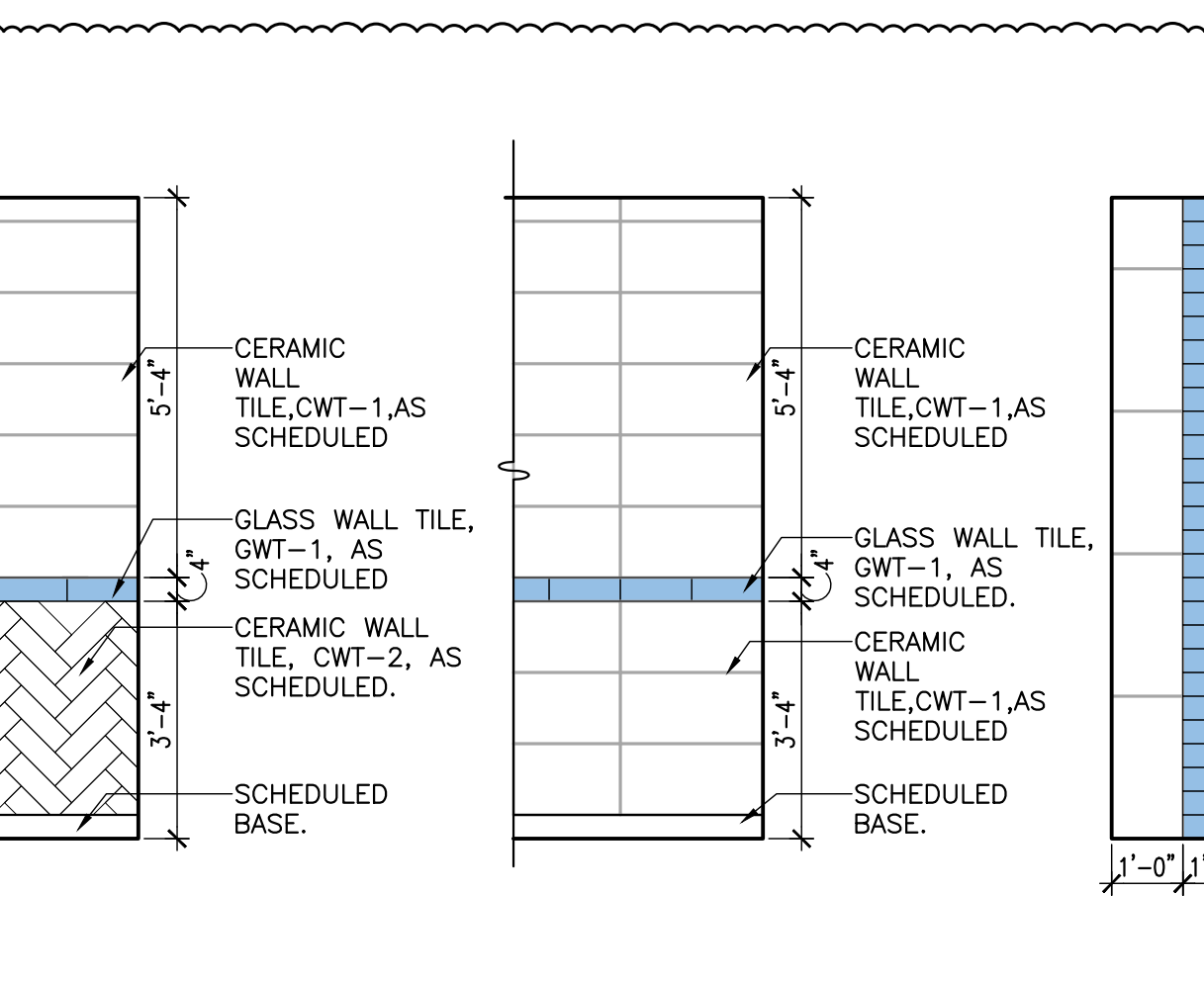
**10 INTERIOR ELEVATION** • WOMEN'S 123  
SCALE: 3/8" = 1'-0"



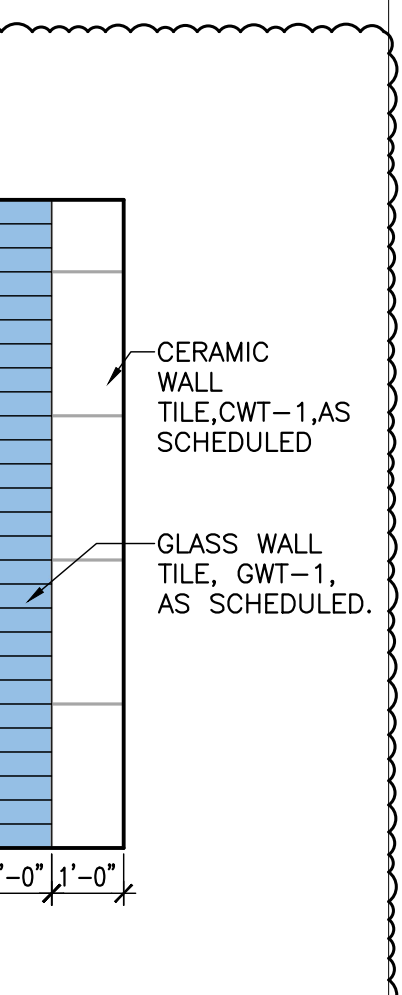
**11 INTERIOR ELEVATION** • RESTROOM 126  
SCALE: 3/8" = 1'-0"



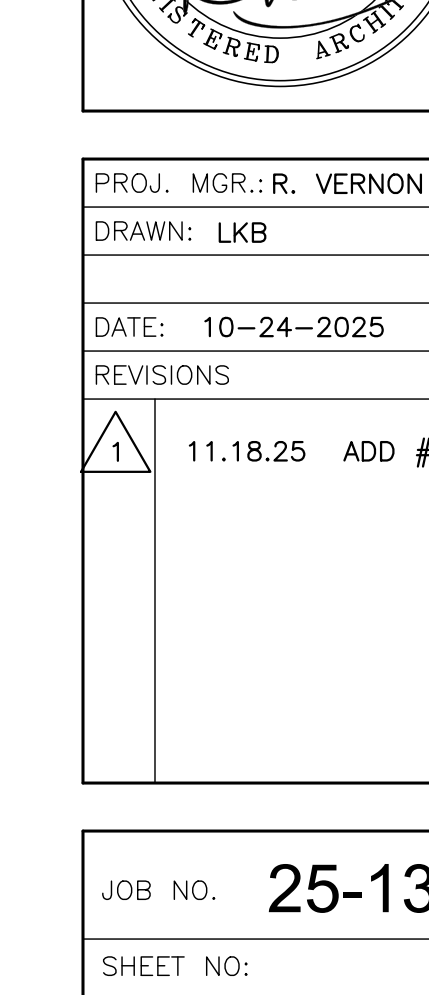
**12 INTERIOR ELEVATION** • RESTROOM 126  
SCALE: 3/8" = 1'-0"



**13 INT.ELEV. TYPICAL TILE PATTERN** • RESTROOM 118 AND RESTROOM 126  
SCALE: 3/8" = 1'-0"



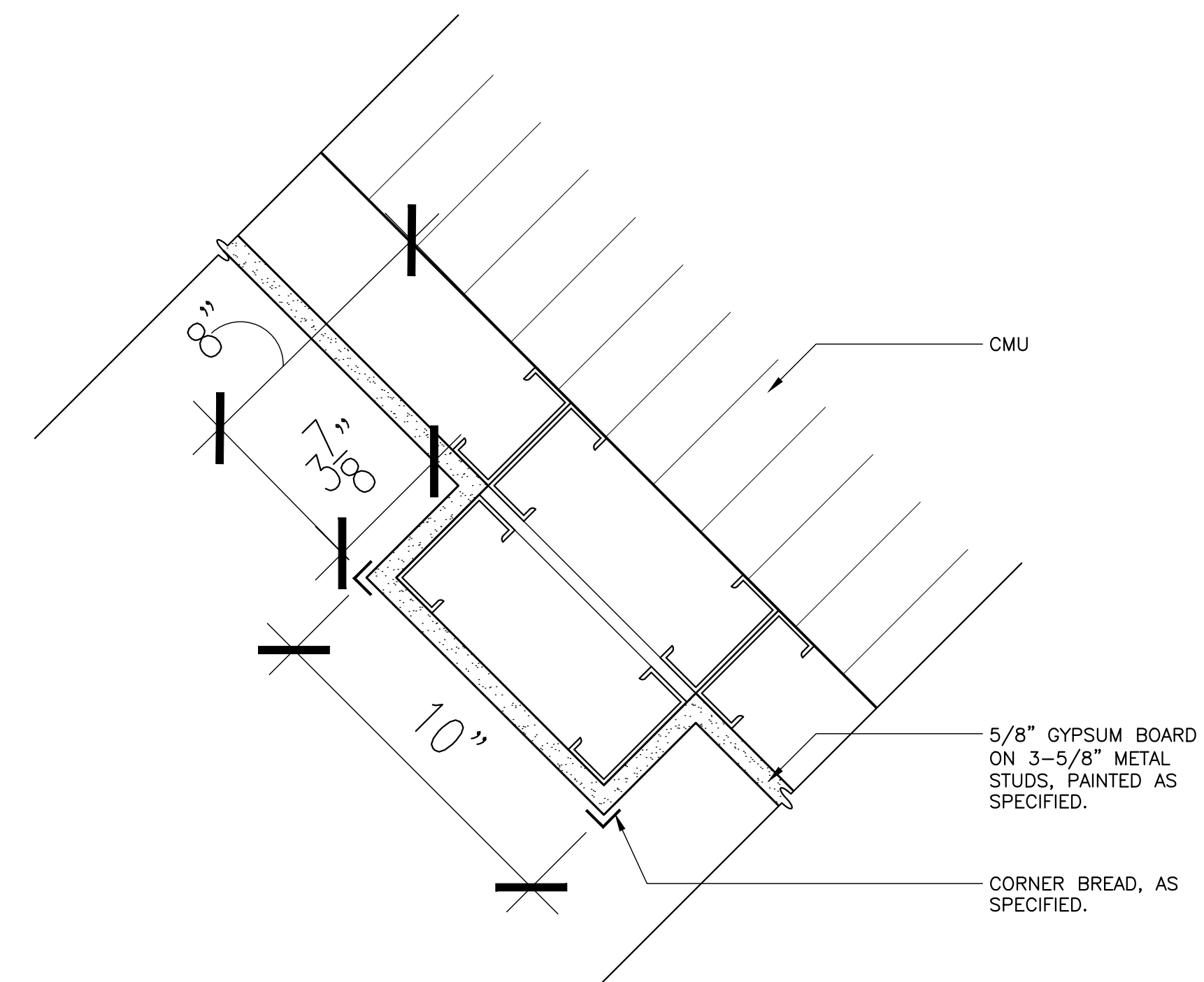
**14 INT.ELEV. TYPICAL TILE PATTERN** • RESTROOM 126  
SCALE: 3/8" = 1'-0"




**15 INT.ELEV. TYPICAL TILE PATTERN** • RESTROOM 126  
SCALE: 3/8" = 1'-0"

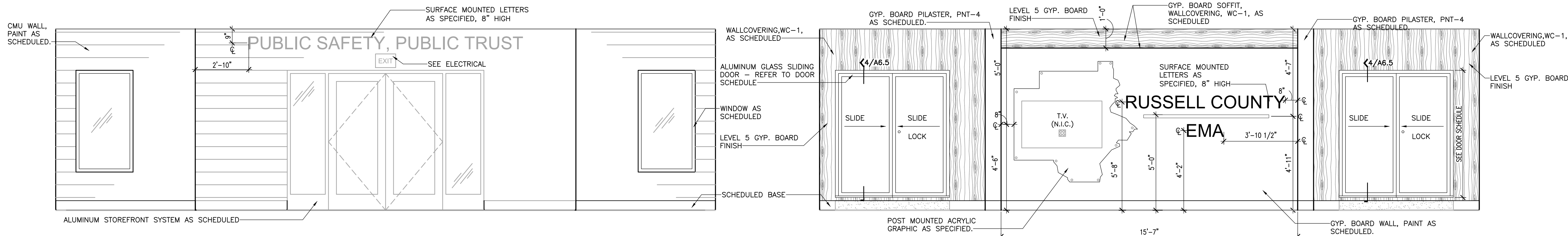
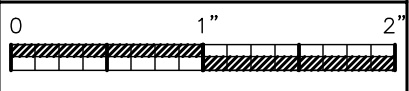
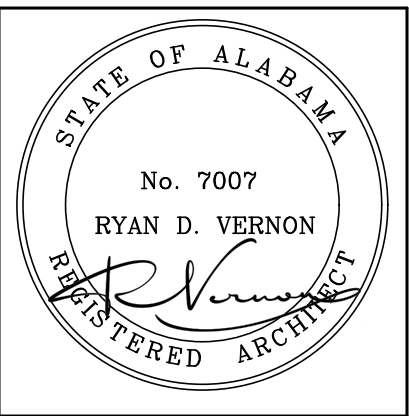
• TYPICAL SHOWER TILE PATTERN IN RESTROOM 118 AND RESTROOM 126





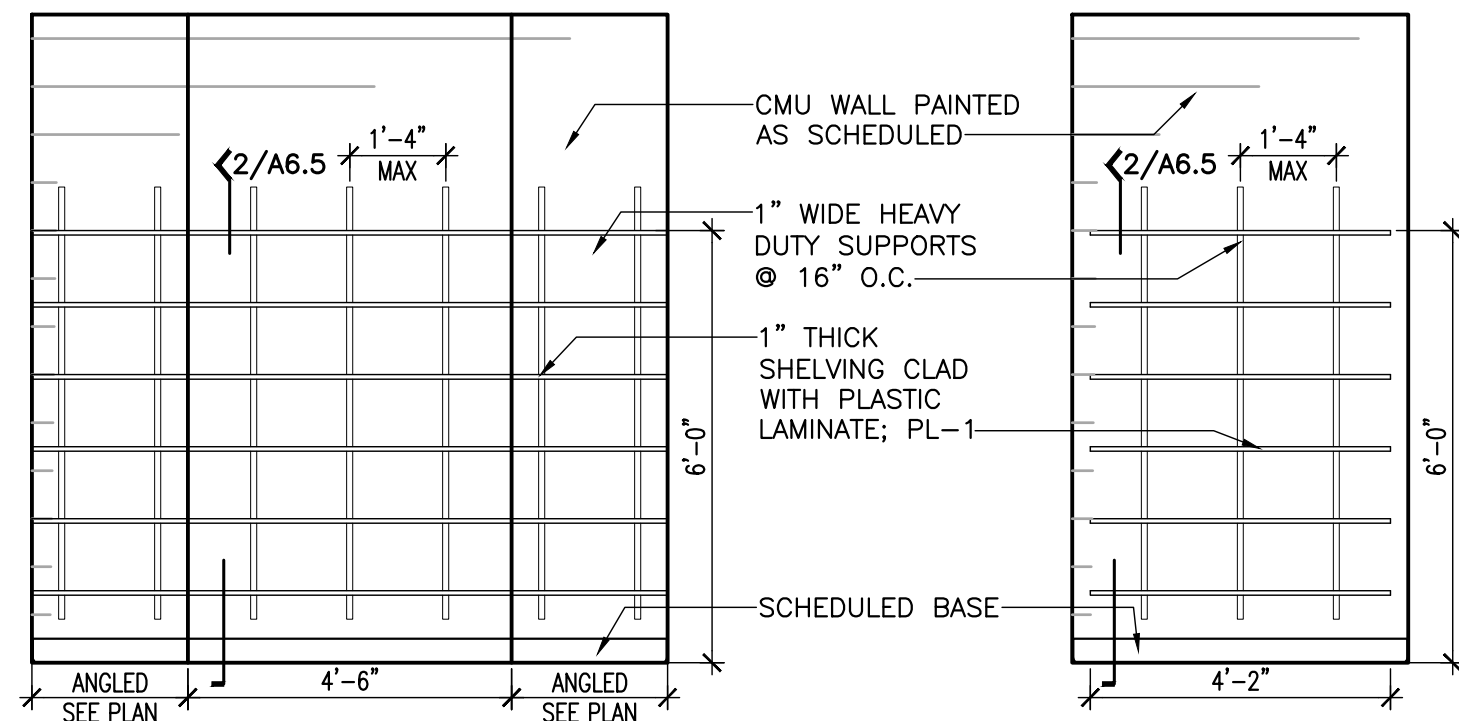
 **2 ENLARGED PLAN DETAIL** © LOBBY PILASTER  
SCALE: 3" = 1'-0"

 **1 CASEWORK PLAN**  
SCALE: 1/8" = 1'-0"

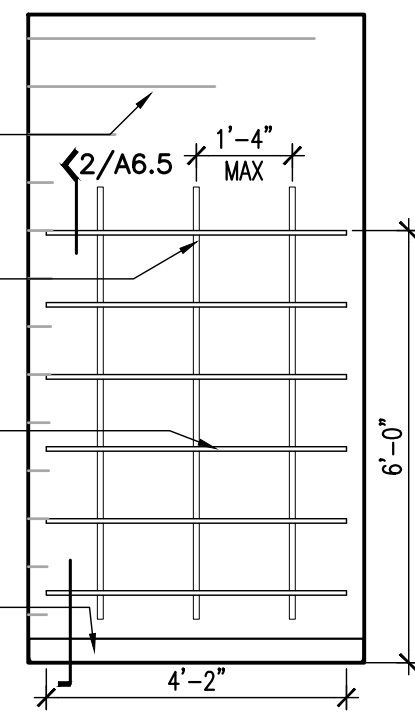


INTERIOR  
**1 ELEVATION** @ LOBBY 100  
SCALE: 3/8" = 1'-0"

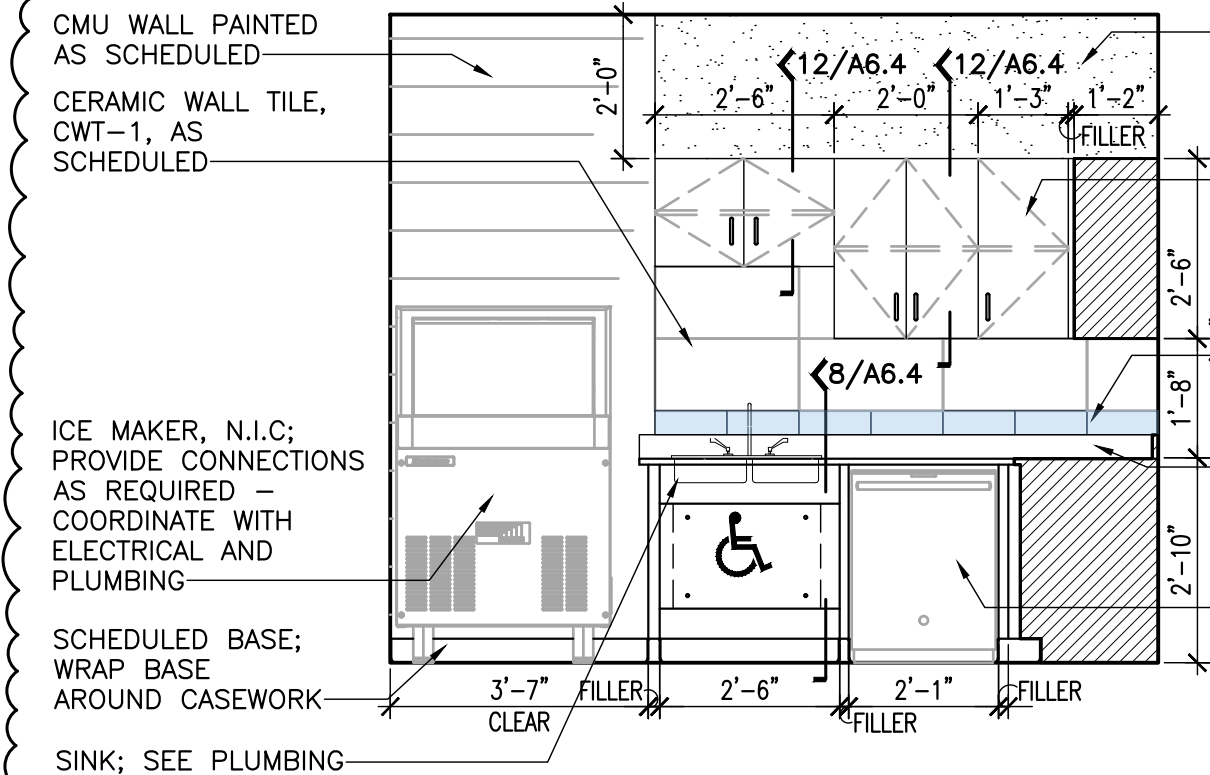
INTERIOR  
**2 ELEVATION** @ LOBBY 100  
SCALE: 3/8" = 1'-0"



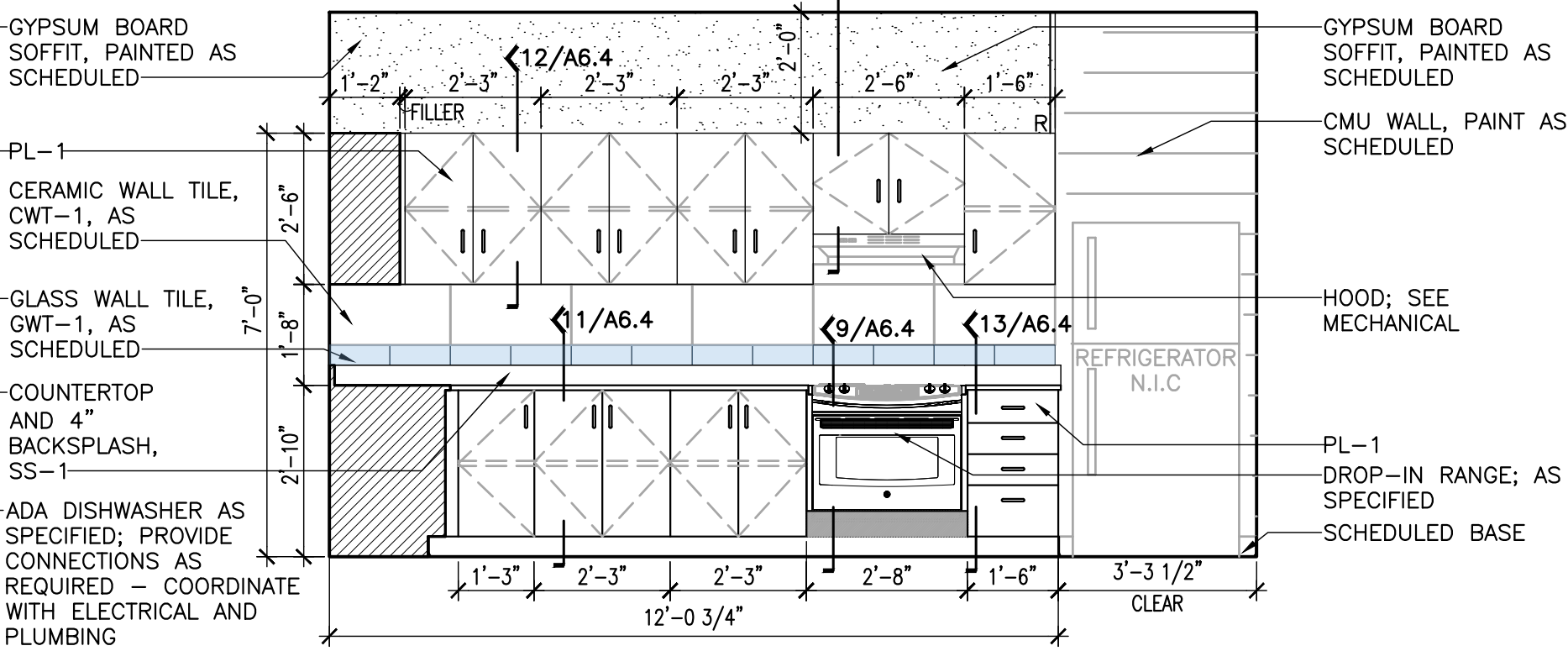
INTERIOR  
**3 ELEVATION** @ DISPLAY 130 &  
DISPLAY 131 (OH)  
SCALE: 3/8" = 1'-0"



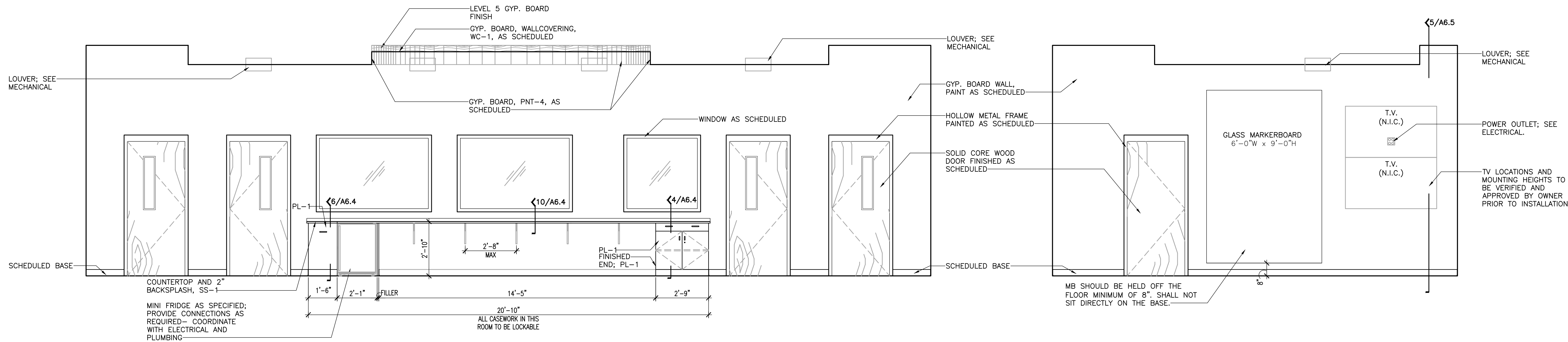
INTERIOR  
**4 ELEVATION** @ CLOSET 107  
SCALE: 3/8" = 1'-0"



INTERIOR  
**5 ELEVATION** @ BREAK ROOM 113  
SCALE: 3/8" = 1'-0"



INTERIOR  
**6 ELEVATION** @ BREAK ROOM 113  
SCALE: 3/8" = 1'-0"



INTERIOR  
**7 ELEVATION** @ EOC 114  
SCALE: 3/8" = 1'-0"

INTERIOR  
**8 ELEVATION** @ EOC 114  
SCALE: 3/8" = 1'-0"

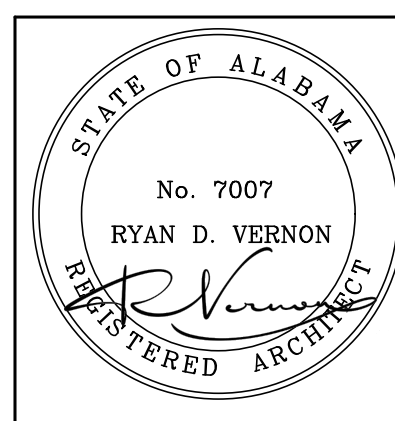




LATHAN  
McKEE  
ARCHITECTS

NEW EMA CENTER FOR  
RUSSELL COUNTY, ALABAMA  
5TH STREET SOUTH, PHENIX CITY AL 36869  
RUSSELL COUNTY COMMISSION

SHEET TITLE:  
INTERIOR ELEVATIONS



PROJ. MGR.: R. VERNON

DRAWN: LKB

DATE: 10-24-2025

REVISIONS

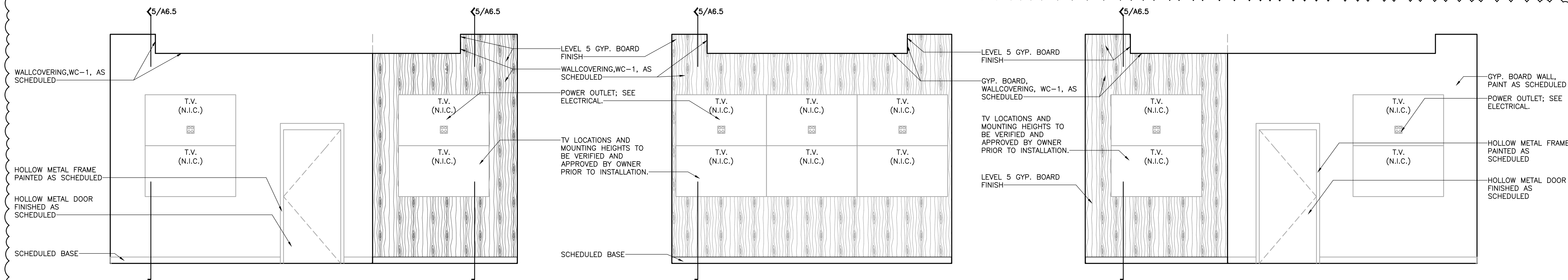
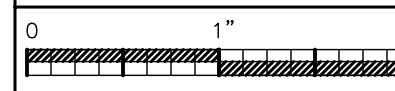
1 11.18.25 ADD #2

JOB NO. 25-13

SHEET NO:

A6.3

17 OF 24

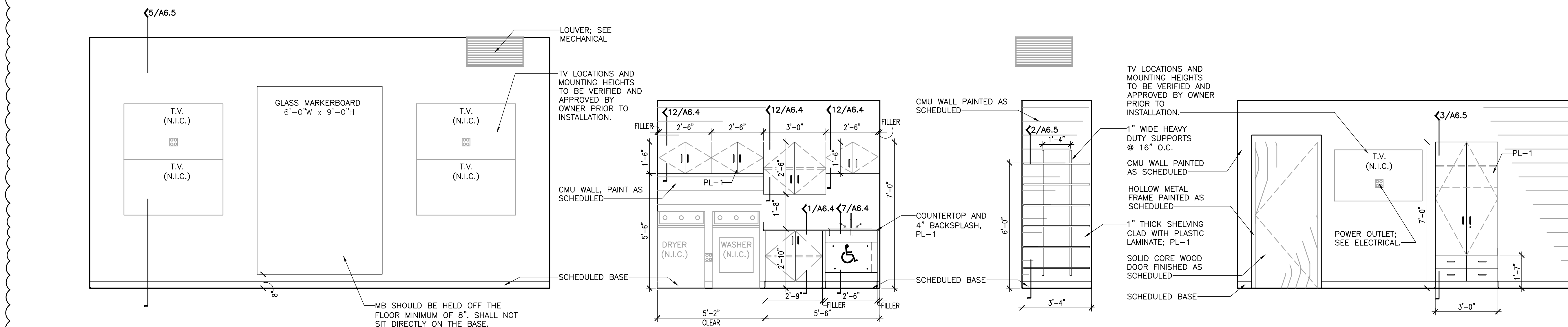


INTERIOR  
**1 ELEVATION** © EOC 114  
SCALE: 3/8" = 1'-0"

INTERIOR  
**2 ELEVATION** © EOC 114  
SCALE: 3/8" = 1'-0"

INTERIOR  
**3 ELEVATION** © EOC 114  
SCALE: 3/8" = 1'-0"

NOTE: ALL TV LOCATIONS AND MOUNTING HEIGHTS TO BE VERIFIED AND APPROVED BY OWNER PRIOR TO INSTALLATION.

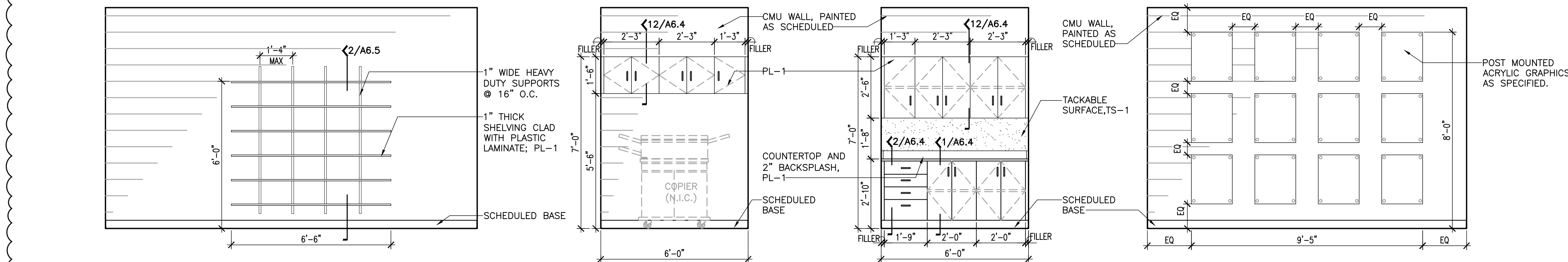


INTERIOR  
**4 ELEVATION** © EOC 114  
SCALE: 3/8" = 1'-0"

INTERIOR  
**5 ELEVATION** © WASHROOM 117  
SCALE: 3/8" = 1'-0"

INTERIOR  
**6 ELEVATION** © CLOSET 127A & CLOSET 124A  
SCALE: 3/8" = 1'-0"

INTERIOR  
**7 ELEVATION** © DAYROOM 119  
SCALE: 3/8" = 1'-0"



INTERIOR  
**8 ELEVATION** © STORAGE CLOSET 122  
SCALE: 3/8" = 1'-0"

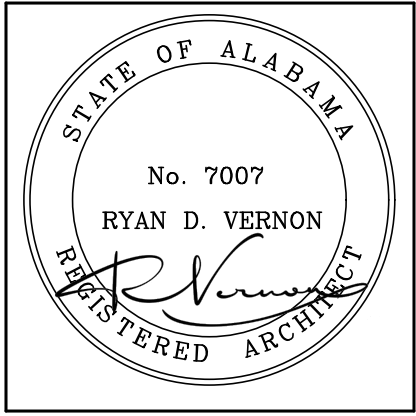
INTERIOR  
**9 ELEVATION** © COPY ROOM 128  
SCALE: 3/8" = 1'-0"

INTERIOR  
**10 ELEVATION** © COPY ROOM 128  
SCALE: 3/8" = 1'-0"

INTERIOR  
**11 ELEVATION** © CORRIDOR 125  
SCALE: 3/8" = 1'-0"

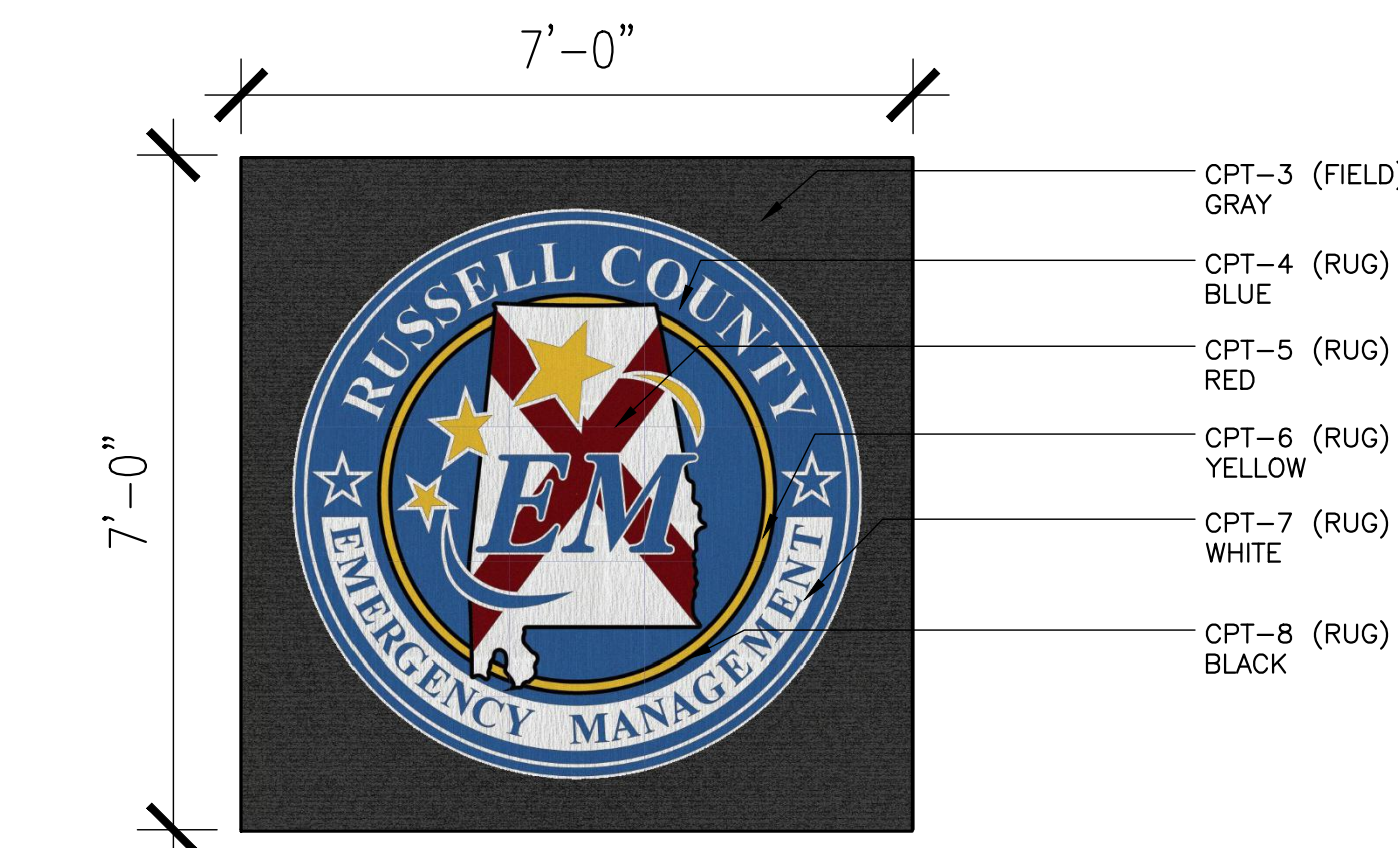
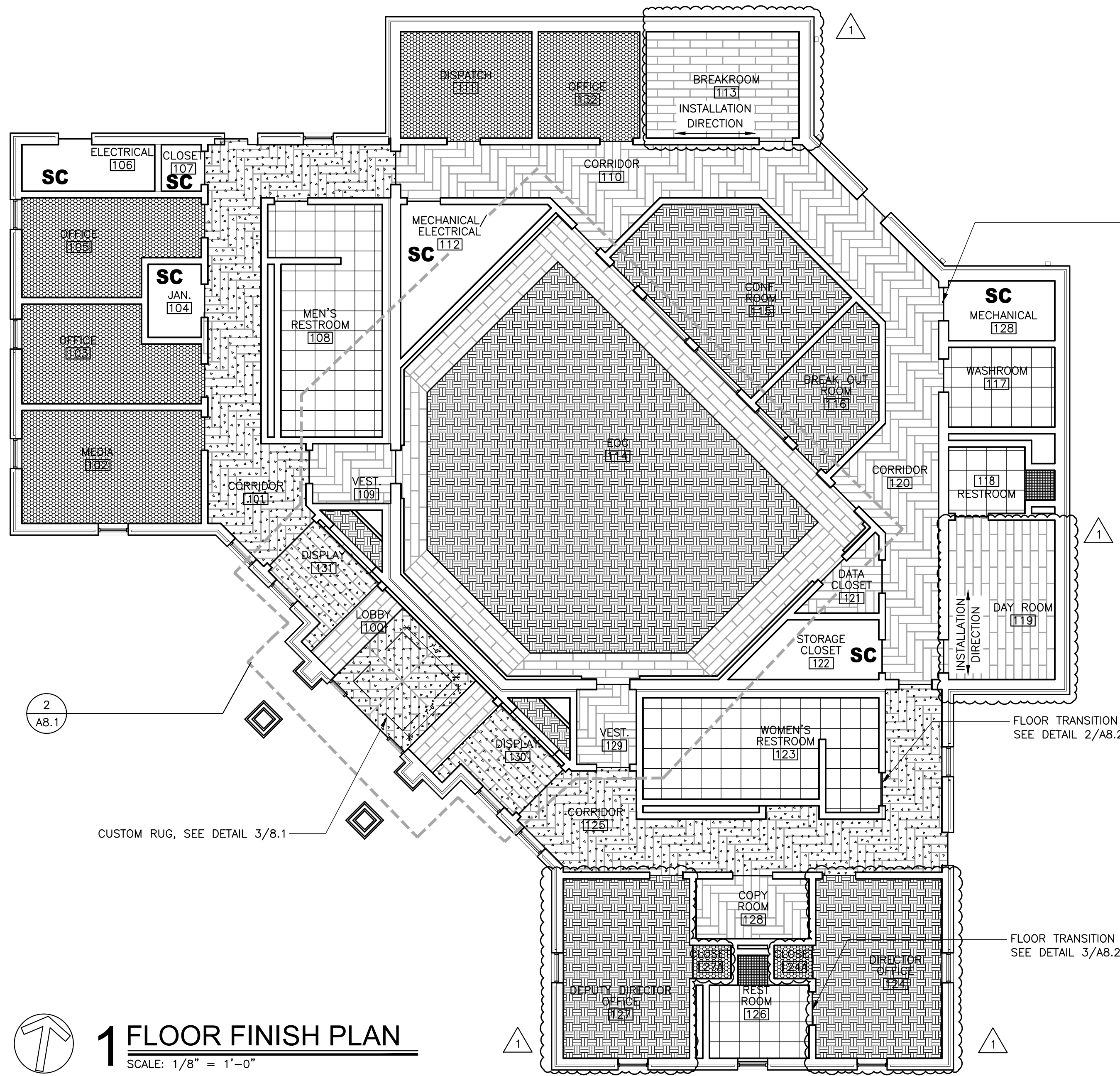
1





PROJ. MGR.:	R. VERNON
DRAWN:	LKB
DATE:	10-24-2025
REVISIONS	
1	11.18.25 ADD #2

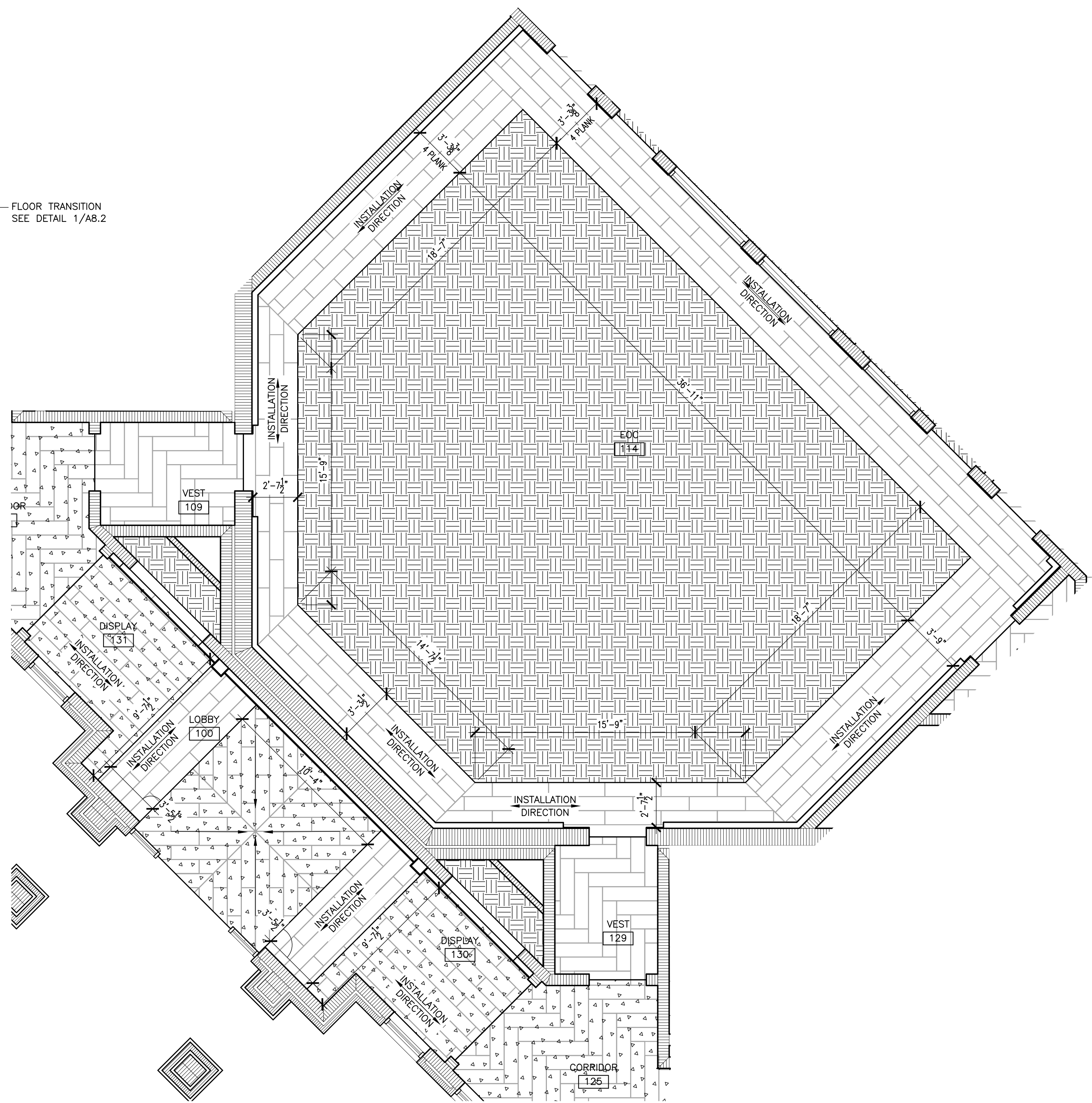
JOB NO.	25-13
SHEET NO:	A8.1
	22 OF 24
	0 1" 2"



FLOOR TRANSITION  
SEE DETAIL 1/A8.2

FLOOR TRANSITION  
SEE DETAIL 2/A8.2

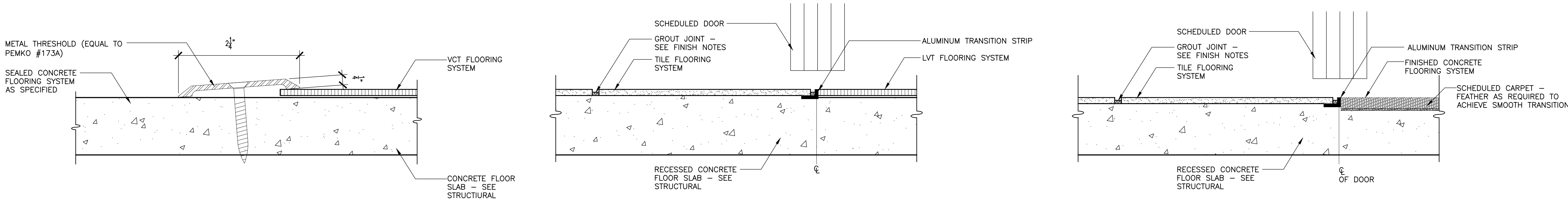
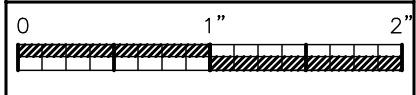
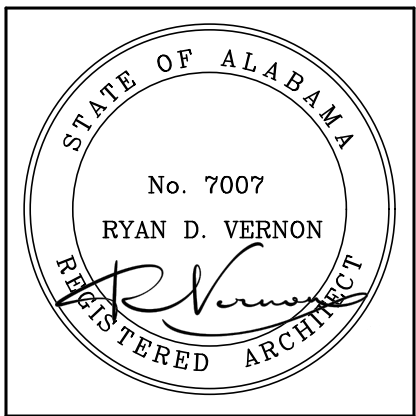
FLOOR TRANSITION  
SEE DETAIL 3/A8.2



2 PARTIAL ENLARGED PLAN © LOBBY 100 & EOC 114  
SCALE: 1/4" = 1'-0"

FINISH PATTERN LEGEND			
	LVT-1 LUXURY VINYL TILE		PFT-1 PORCELAIN FLOOR TILE
	LVT-2 LUXURY VINYL TILE		PFT-2 PORCELAIN FLOOR TILE
	CPT-1 CARPET		SC SEALED CONCRETE
	CPT-2 CARPET		





1 TRANSITION DETAIL  
NOT TO SCALE

2 TRANSITION DETAIL  
NOT TO SCALE

3 TRANSITION DETAIL  
NOT TO SCALE

FINISH SCHEDULE												
ROOM NO.	ROOM NAME	FLOOR	BASE	MILLWORK FACE TOP	WALLS				DOOR FRAME	CEILING/SOFFIT PAINT	NOTES	
					NORTH	SOUTH	EAST	WEST				
1	100 LOBBY	LVT-1,2&CPT3,4,5,6,7,8	RB-1	-	-	PNT-1/PNT-4/WC-1	PNT-1	PNT-1	PNT-1	PNT-2	PNT-3/WC-1	CPT-3&8 CUSTOM RUG
	101 CORRIDOR	LVT-1	RB-1	-	-	PNT-1	PNT-1	PNT-1	PNT-1	PNT-2		
	102 MEDIA	CPT-2	RB-2	-	-	PNT-1	PNT-1	PNT-1	PNT-1	PNT-2		
	103 OFFICE	CPT-2	RB-2	-	-	PNT-1	PNT-1	PNT-1	PNT-1	PNT-2		
	104 JAN.	SC	RB-2	PL-1	PL-1	PNT-1	PNT-1	PNT-1	PNT-1	PNT-2		EPOXY PAINT ON ALL WALLS
	105 OFFICE	CPT-2	RB-2	-	-	PNT-1	PNT-1	PNT-1	PNT-1	PNT-2		
	106 ELECTRICAL	SC	RB-2	-	-	PNT-1	PNT-1	PNT-1	PNT-1	PNT-2		
	107 CLOSET	LVT-1	RB-2	PL-1	PL-1	PNT-1	PNT-1	PNT-1	PNT-1	PNT-2		
1	108 MENS RESTROOM	PFT-1	CTB-1	-	-	CWT-1/CWT-2/GWT-1	CWT-1/CWT-2/GWT-1	PNT-1	CWT-1/CWT-2/GWT-1	PNT-2		EPOXY PAINT ON ALL WALLS
	109 VESTIBULE	LVT-1	RB-2	-	-	PNT-1	PNT-1	PNT-1	PNT-1	PNT-2		
	110 CORRIDOR	LVT-2	RB-2	-	-	PNT-1	PNT-1	PNT-1	PNT-1	PNT-2		
	111 DISPATCH	CPT-2	RB-2	PL-1	PL-1	PNT-1	PNT-1	PNT-1	PNT-1	PNT-2		
	112 MECHANICAL/ELECTRICAL	SC	RB-2	-	-	PNT-1	PNT-1	PNT-1	PNT-1	PNT-2		
1	113 BREAK ROOM	LVT-2	RB-2	PL-1	SS-1	PNT-1/CWT-1/GWT-1	PNT-1	PNT-1	PNT-1/CWT-1/GWT-1	PNT-2		
	114 EOC	LVT-2 & CPT-1	RB-2	PL-1	SS-1	PNT-1	WC-1	PNT-1/WC-1	PNT-1/WC-1	PNT-2	PNT-3/PNT-4/WC-1	
	115 CONFERENCE ROOM	CPT-1	RB-2	-	-	PNT-1	PNT-1	PNT-1	PNT-1	PNT-2		
	116 BREAKOUT ROOM	CPT-1	RB-2	-	-	PNT-1	PNT-1	PNT-1	PNT-1	PNT-2		
1	117 WASHROOM	PFT-1	CTB-1	PL-1	PL-1	PNT-1	PNT-1	PNT-1	PNT-1	PNT-2		EPOXY PAINT ON ALL WALLS
	118 RESTROOM	PFT-1/PFT-2	CTB-1	-	-	CWT-1/CWT-2/GWT-1	CWT-1/GWT-1	CWT-1/GWT-1/GWT-2	CWT-1/GWT-1	PNT-2		EPOXY PAINT ON ALL WALLS
1	119 DAY ROOM	LVT-2	RB-2	PL-1	PL-1	PNT-1	PNT-1	PNT-1	PNT-1	PNT-2		
	120 CORRIDOR	LVT-2	RB-2	-	-	PNT-1	PNT-1	PNT-1	PNT-1	PNT-2		
	121 DATA CLOSET	LVT-2	RB-2	-	-	PNT-1	PNT-1	PNT-1	PNT-1	PNT-2		
	122 STORAGE CLOSET	SC	RB-2	PL-1	PL-1	PNT-1	PNT-1	PNT-1	PNT-1	PNT-2		
1	123 WOMEN'S RESTROOM	PFT-1	CTB-1	-	-	PNT-1	CWT-1/CWT-2/GWT-1	CWT-1/CWT-2/GWT-1	CWT-1/CWT-2/GWT-1	PNT-2		EPOXY PAINT ON ALL WALLS
	124 DIRECTOR OFFICE	CPT-1	RB-2	-	-	PNT-1	PNT-1	PNT-1	PNT-1	PNT-2		
	124A CLOSET	CPT-1	RB-2	PL-1	PL-1	PNT-1	PNT-1	PNT-1	PNT-1	PNT-2		
	125 CORRIDOR	LVT-1	RB-1	-	-	PNT-1/CWT-1/GWT-1	PNT-1	PNT-1	PNT-1	PNT-2		
1	126 RESTROOM	PFT-1/PFT-2	CTB-1	-	-	CWT-1/CWT-2/GWT-1/GWT-2	CWT-1/GWT-1	CWT-1/GWT-1	CWT-1/CWT-2/GWT-1	PNT-2		EPOXY PAINT ON ALL WALLS
	127 DEPUTY DIRECTOR OFFICE	CPT-1	RB-2	-	-	PNT-1	PNT-1	PNT-1	PNT-1	PNT-2		
	127A CLOSET	CPT-1	RB-2	PL-1	PL-1	PNT-1	PNT-1	PNT-1	PNT-1	PNT-2		
	128 COPY ROOM	LVT-1	RB-2	PL-1	PL-1	PNT-1	PNT-1	PNT-1	PNT-1	PNT-2		
	129 VESTIBULE	LVT-1	RB-2	-	-	PNT-1	PNT-1	PNT-1	PNT-1	PNT-2		
	130 DISPLAY	CPT-1	RB-2	-	-	PNT-1	PNT-1	PNT-1	PNT-1	PNT-2		
	131 DISPLAY	CPT-1	RB-2	-	-	PNT-1	PNT-1	PNT-1	PNT-1	PNT-2		
	132 OFFICE	CPT-2	RB-2	-	-	PNT-1	PNT-1	PNT-1	PNT-1	PNT-2		

BASE (RUBBER/EPOXY/PORCELAIN)				PAINT			
ITEM	MANUFACTURER	ITEM NUMBERNAME	LOCATION	ITEM	MANUFACTURER	ITEM NUMBERNAME	TYPE/LOCATION
RB-1	JOHNSONITE	6" MILLWORK WALL BASE SYSTEM PROFILE: RECESSED MW-XX--X63 COLOR: 63 BRUNT UMBER B	SEE FINISH SCHEDULE	PNT-1	SHERWIN WILLIAMS	COLOR: AGREEABLE GRAY SW7029	GENERAL WALLS
RB-2	JOHNSONITE	4" BURKE BASE COLOR: 63 BRUNT UMBER B	SEE FINISH SCHEDULE	PNT-2	SHERWIN WILLIAMS	COLOR: DORIAN GRAY SW7017	GENERAL TRIM
CBT-1	DALTILE	4"x12" BULLNOSE COLOR: ARCTIC WHITE	SEE FINISH SCHEDULE	PNT-3	SHERWIN WILLIAMS	COLOR: CEILING BRIGHT WHITE SW7007	GENERAL CEILING AND SOFFIT
				PNT-4	SHERWIN WILLIAMS	COLOR: (BLUE)	ACCENT
LUXURY VINYL TILE				PLASTIC LAMINATE			
ITEM	MANUFACTURER	ITEM NUMBERNAME	LOCATION	ITEM	MANUFACTURER	ITEM NUMBERNAME	TYPE/LOCATION
LVT-1	INTERFACE	COLLECTION: LEVEL SET STYLE: NATURAL WOODGRAINS COLOR: WASHED WHEAT A00207 SIZE: 25CM X 1M	SEE FINISH FLOOR PLAN	PL-1	STEVENSWOOD	COLOR: G86 GREGIO NOTTE EDGE BAND: INCLUDED	HORIZONTAL SURFACES: 11' SOFTEX FINISH VERTICAL SURFACES: 30' ARTIKA FINISH
LVT-2	INTERFACE	COLLECTION: LEVEL SET STYLE: NATURAL WOODGRAINS COLOR: STORM A00205 SIZE: 25CM X 1M	SEE FINISH FLOOR PLAN				
CERAMIC TILE				SOLID SURFACE			
ITEM	MANUFACTURER	ITEM NUMBERNAME	LOCATION	ITEM	MANUFACTURER	ITEM NUMBERNAME	TYPE/LOCATION
CWT-1	DALTILE	COLLECTION: LUMINOUE STYLE: FLAT COLOR: ARCTIC WHITE 0190 SIZE: 12X24	MENS RESTROOM 108, RESTROOM 118, WOMENS RESTROOM 123, RESTROOM 126				
CWT-2	DALTILE	COLLECTION: COLOR WHEEL LINEAR COLOR: ARCTIC WHITE 0190 SIZE: 4X12	MENS RESTROOM 108, BREAK ROOM 113, RESTROOM 118, WOMENS RESTROOM 123, AND RESTROOM 126	SS-1	BPI DURASEIN	COLOR: BLOSSOMING	SEE FINISH SCHEDULE
GLASS TILE				TACKABLE SURFACE			
CWT-1	CREATIVE MATERIALS CORPORATION	COLLECTION: FACETS COLOR: MEDIUM BLUE SIZE: 4X12	MENS RESTROOM 108, BREAK ROOM 113, RESTROOM 118, WOMENS RESTROOM 123, AND RESTROOM 126	ITEM	MANUFACTURER	ITEM NUMBERNAME	TYPE/LOCATION
PORCELAIN FLOOR TILE				CONCRETE FLOORING			
ITEM	MANUFACTURER	ITEM NUMBERNAME	LOCATION	TS-1	KORSEAL	COLOR: EARTHEN 08	SEE FINISH SCHEDULE
PFT-1	DALTILE	COLLECTION: BRYNE COLOR: COASTLINE BR30 SIZE: 24X24	MENS RESTROOM 108, WASHROOM 117, RESTROOM 118, WOMENS RESTROOM 123, AND RESTROOM 126	ITEM	MANUFACTURER	ITEM NUMBERNAME	LOCATION
PFT-2	DALTILE	COLLECTION: BRYNE COLOR: COASTLINE BR30 SIZE: 2X2	SHOWER FLOOR; RESTROOM 118, AND RESTROOM 126	SC	SHERWIN WILLIAMS	SEE SPEC	SEE FINISH FLOOR PLAN
PORCELAIN WALL TILE				WALLCOVERING			
ITEM	MANUFACTURER	ITEM NUMBERNAME	LOCATION	WC-1	KORSEAL	COLLECTION: REATEC ARCHITECTURAL FILM STYLE: OAK STRAIGHT GRAIN 11 COLOR: RW-5622	LOBBY 100 AND EOC 114
PWT-1	DALTILE	COLLECTION: BRYNE COLOR: COASTLINE BR30 SIZE: 24X24	CORRIDOR 125	FIBERGLASS REINFORCED PANEL			
FINISH ABBREVIATION LEGEND				ITEM	MANUFACTURER	ITEM NUMBERNAME	LOCATION
APF	ACOUSTIC PANEL FABRIC	GYP	GYPSUM BOARD	FRP-1	KEMLITE COMPANY INC.	COLOR: WHITE SIZE: 4' X 9'	LOBBY 100 AND EOC 114
BFC	BROOM FINISHED CONCRETE	CWT	GLASS WALL TILE				
CFT	CERAMIC FLOOR TILE	LVT	LUXURY VINYL TILE				
CMT	CERAMIC WALL TILE	PC	POLISHED CONCRETE				
CTB	CERAMIC TILE BASE	PL	PLASTIC LAMINATE				
CC	COATED CONCRETE	PNT	PANT				
CM	CROWN MOLDING	PFT	PORCELAIN FLOOR TILE				
CR	CHAIR RAIL	PTB	PORCELAIN TILE BASE				
DP	DIGITAL ACOUSTIC PANEL	PWT	PORCELAIN WALL TILE				
ERB	EPOXY RESIN BASE	PWF	PRE-ENG. WOOD				
ERF	EPOXY RESIN FLOOR	QR	QUARTZ RESIN FLOOR				
ESD	STATIC CONTROL TILE	ORB	QUARTZ RESIN BASE				
		RB	RUBBER BASE				
		RST	RUBBER STAIR TREAD				
		SC	SEALED CONCRETE				
		SS	SOLID SURFACE				
		ST	STAIN				
		STC	STAINED CONCRETE				
		TP	TACKABLE ACOUSTIC PANEL				
		TS	TACKABLE SURFACE				
		VCT	VINYL COMP. TILE				
		WB	WOOD BASE				
		WC	WALLCOVERING				
		WD	WOOD FLOORING (GYM)				
		WF	WOOD FLOORING (STAGE)				
		WP	WOOD PANELING				
		WV	WOOD VENEER				
		ZA	ZINTRA ACOUSTICS				
FINISH NOTES							
ALL WALLS TO BE PAINTED PNT-1 UNLESS NOTED OTHERWISE.							
ALL WALLS AND CEILINGS LOCATED IN WET AREAS SHALL HAVE EPOXY BASED PAINT.							
ALL SOFFITS SHALL BE PNT-3, UNLESS OTHERWISE DIRECTED BY ARCHITECT							